



# The Power of the Cow

## 9.23.23

4:00 PM • SMITH GENETICS, GIDDINGS, TEXAS

Offering 90 lots of Purebred and Percentage Simbrah Cattle, including select Simmentals. **SALE WILL BE BROADCAST LIVE ON [WWW.DVAUCTION.COM](http://WWW.DVAUCTION.COM)**

Sale lineup includes foundation donors, embryo lots, bred, pairs, herd sires and herd sire prospects, and fancy show prospects destined for the purple.

### 2023 Synergy XVI Weekend Schedule

#### FRIDAY, SEPTEMBER 22

Noon Viewing of Sale Cattle

#### SATURDAY, SEPTEMBER 23

All Day Viewing of Sale Cattle

11:00 AM - 1:00 PM Skill-A-Thon and Sales Talk. Three age groups: 12 and under; 13-15-year-olds and 16-19 year-olds. These contests will close at 1:00 PM.

1:00 PM Showmanship

3:45 PM Announcements

4:00 PM Synergy XVI Sale, followed by dinner

#### SUNDAY, SEPTEMBER 24

8:30 AM \$15,000 Synergy Showcase



### Sale Participants...

**Triple J Ranch** The Tortorice Family  
409/782-5892 • jt@raosbakery.com

**TMP Livestock**  
David and Thuy Grimes  
832/594-7530 • dgrimes012@gmail.com

**Strack Farms** Keith and Shelley Strack  
281/455-5896 • keith.strack@yahoo.com

**Smith Genetics** Tim and Haley Smith,  
Joel Isgrig 512/587-7896 • smithgenetics1@gmail.com

**Reavis Farms** Wayne, Jim Bob and  
Randy Reavis 956/207-1447 • jwreavis@aol.com

**Monte Christo Cattle Co.**  
Jud and Margie Flowers  
956/207-2087 • judf@lonestarcitrus.com

**McCrary Farms** Mark and Martha McCrary  
903/278-6819 • mamamc4@aol.com

**Hensgens Bros.** The Hensgens Family  
985/992-9119 • joehensgens@yahoo.com

**Fralise Farm and Ranch**  
The Tortorice Family  
409/782-5892 • ambertortorice@gmail.com

**Burch Cattle** John David Burch  
361/563-3124 • burchcattle@gmail.com

**7N Ranch** The Nieschwietz Family  
956/460-6002 • pjnieschwietz@sbcglobal.net

#synergy23



# Scholarship PROGRAM



GERTRUDE SMITH



MARILYN NIESCHWIEZ



SMITH FAMILY



PETE, MARILYN AND PETE NIESCHWIEZ, SR.



RODRIGO DA SILVA

This is the second year for the \$1,000 Synergy scholarships to be awarded. The Smith Family, Smith Genetics and The Nieschwietz Family, 7N Ranch initiated the program last year. The Rodrigo Da Silva Family is joining in the efforts in 2023 and will also be awarding a \$1,000 scholarship.

These were created to assist youth in their education, as well as honor members of each family. Both families have generations of involvement in agriculture and a strong desire to see continued involvement by youth in farming and ranching and promoting agriculture regardless of their careers.

The requirements for the scholarships can be found on the Synergy tab at [www.smithgenetics.com](http://www.smithgenetics.com).

In announcing the scholarships last year, Gertrude Smith, matriarch of the Smith family, says that she is proud that her family has chosen to do this, as it's important to help our young people learn and it's a great way to show care and concern for others.

"We raised all of our kids in agriculture and I can see very vividly how it shaped each one and how it has played an important part in their successes as adults. I feel the amount of responsibility our kids were given developed character, strong work ethic and integrity. These animal projects provide a unique way of learning and teaches so much," she explained.

Gertrude passed away in February 2023.

Marilyn Nieschwietz the matriarch of the 7N Ranch family is also firm in her convictions about why their family has chosen to do this and one reason stands out. "My late husband, Pete, Sr. was in agriculture all his life. When he was 15, his dad died and he, along with his mother, continued to run the family farm – something he did till he passed earlier this year. This is a way for us to honor him and his lifelong commitment."

"We had five children and three of those were in college at the same time, so this is a way for us to give and help a family and promote being a part of Synergy," she summarized.

Rodrigo De Silva served as a judge at the 2022 Synergy Scholarship interviews.

"I was so impressed by the young people I interviewed. Their knowledge, their confidence, their manners and their commitment to the beef industry was so strong. My family wishes to participate and reward another young person this year," he said.

Investing in the *Future*



The 2022 Smith Family Scholarship was awarded to Hallie Hackett. Pictured (l to r) Joel Isgrig, Haley Smith, Hallie Hackett, Tim Smith and Ginny and Bill Smith.



The 2022 Nieschwietz Family Scholarship was awarded to Carlton Luke Bauer. Pictured (l to r) Jeanette Nieschwietz, Marilyn Nieschwietz, Luke Bauer and Pete Nieschwietz, Jr.

# Welcome to Synergy XVI Sale and the \$15,000 Synergy Showcase

## SYNERGY SHOWCASE

The Synergy Showcase is an annual event sponsored by Synergy members. Show calves purchased from a Synergy member are eligible for Synergy Showcase XVI to be held September 24. Contact any Synergy member for details and rules of the unique, one-of-a-kind showcase. Entry card and class breaks are on page 5. Heifers purchased in the sale can show in the Showcase, September 24.

## BROADCAST VIDEO, MAIL OR PHONE BIDS

If you are unable to attend the sale in person, please feel free to contact Terry Reagan or any Synergy member (see cover for cell numbers) to place your bid which will be handled with the utmost confidence. We thank you for all bids and feel confident that our cattle will assist you in accomplishing your genetic goals.

Sale day phones 512-587-7896 or 956-207-1447.

Sale will be broadcast live on [www.dvauction.com](http://www.dvauction.com)

## AUCTIONEER

Terry Reagan 210-414-4411

## SALES STAFF

Representatives from the *Gulf Coast Cattleman*, *Weekly Livestock Reporter*, *Southern Livestock Standard*, *Simbrah World* and American Simmental Association will be at the sale.

## EPDS

EPDs current August 16, 2023.

## GLOSSARY

**All-Purpose Index (API):** Evaluates sires for use on the entire cow herd (bred to both Angus first-calf heifers and mature cows) with the portion of their daughters required to maintain herd size retained and the remaining heifers and steers put on feed and sold grade and yield.

**Terminal Index (TI):** Evaluates sire for use on mature Angus cows with all offspring put on feed and sold grade and yield.

**Using API and TI:** First, determine which index to use; if you're keeping replacements use API, if not, TI. Then just as with EPDs zero in on the unit difference between the bulls. The difference can be used to determine how much a bull is worth compared to another. Or, put another way, how much you can pay for one bull compared to another. For example, when buying an all-purpose-type sire, you can quickly figure a bull scoring +100 for API is worth an extra \$6,000 over a +50 bull if both are exposed to 30 cows over 4 years (\$50 diff. x 30 hd. X 4 yr.= \$6,000). A percentile-ranking chart is required to determine where a bull's index value ranks him relative to other bulls in the breed. For percentile rankings or more detailed information about EPDs and \$ indexes visit [www.simmental.org](http://www.simmental.org).

## PARTNERSHIP LOTS

In the case of bull partnership lots, the new partner will have first choice to decide what 60 days they will be able to breed the bull. All decisions relating to the possession, showing, promotion, collecting of semen, and marketing will be mutually agreed upon prior to the transaction with both parties dividing all future expenses and net revenue.

Female partnership lots will be owned 50/50 with all future production being co-owned. The partner with possession will receive \$375 per year for maintenance from the other partner. A partner that is selling their interest must give the other partner the right to match any bona fide guaranteed offer prior to selling their interest to a third party. Contract on these lots will be available on sale day.

## SALE TERMS AND CONDITIONS

All cattle sell under the ASA terms and conditions. Copies will be available on sale day.

## CATTLE TRANSPORTATION

Professional haulers will be on hand to assist you with the delivery of your cattle. We will assist you in making the most economical trucking arrangements.

## HEALTH

All sale cattle of age will be brucellosis and tuberculosis tested and will have the necessary health papers to travel to other states. Any export health papers will be provided at the seller's expense.

**Syn-er-gy n.** The action of two or more to achieve an effect of which each is individually incapable.

Participants in Synergy have committed to marketing their best genetics and making this event more by working together rather than as individuals. Synergy was developed to be a showcase for the breed. Please come join us.

## SEMEN OFFER ON FEMALES

Buyers will receive two units of semen with each female purchased from any of the bulls owned and collected by that particular consigning Synergy member of that lot. This semen is solely for use on your purchased female. Your choice of semen must be made prior to May 1, 2024.

## SEMEN POLICY ON BULLS IN SALE

Synergy consignors reserve the right to collect 300 units of semen from any of our bulls in this sale at our expense and at the buyer's convenience.

## RANCH LOCATION

**Directions From Giddings-** Hwy 290 leads to Giddings, at the intersection of Hwy 290 and Hwy 77, go South on Hwy 77 approximately 2 miles and turn left on Road #223 (just past the large beige water tower), go about ½ mile and turn left on gravel road #2231. Stay on Road #2231 until you cross the cattle guard and follow trailer and parking signs.

**Directions From LaGrange-** From LaGrange go North on Hwy 77 approximately 16 miles and watch for sign to County Rd. #223 and turn right on Rd. #223 (just before the large beige water tower) go about ½ mile and turn left on gravel road #2231. Stay on Road #2231 until you cross the cattle guard and follow trailer and parking signs.

**Physical address:** 1316 Private Road 2231, Giddings, Texas 78942

## AIR TRANSPORTATION

We are 60 minutes from Austin Bergstrom Airport which is serviced by most airlines including Southwest and American.

## CATTLE LOAD OUT

We will not load any of the sale cattle until after the sale.

## CATALOG AND VIDEOS MAY BE VIEWED AT

[www.smithgenetics.com](http://www.smithgenetics.com)

## SALE ACCOMMODATIONS

Best Western, 979-542-5000

Super 8, 979-542-9666

Motel 6, 979-542-5791

America's Best Value Inn, 979-542-3111

Book your reservation under the Simbrah Synergy room block at the above hotels.

## RVS WELCOME

South Forty RV Park

979/366-9341

3689 South Hwy 77

Giddings, Texas

## ALL PERSONS ATTENDING THIS SALE DO SO AT THEIR OWN RISK.

Synergy, Synergy members, sale management or host Tim Smith, are not responsible for any accidents or injuries that may occur during or at the location of the Synergy Sale or Synergy Showcase.

Sale book produced by The Hollida Company/Cattle Design.

Majority of photography by Cattle Solutions.



# The Power of the Cow

FOLLOW US ON  AND  #synergy23  
OR VIEW THE SYNERGY TAB AT [WWW.SMITHGENETICS.COM](http://WWW.SMITHGENETICS.COM)





# Sale Participants

## NIESCHWIETZ 7N RANCH

We would like to take the time to welcome everyone to SYNERGY XVI. A big thanks goes out to Tim for all of his help and support. We would also like to thank all of the juniors, parents, 4H and FFA advisors, fellow breeders and everyone else who comes out and makes this event a huge success. Without all of you this event wouldn't be possible or be the success that it is.



Thank you Martha, you are always working to make this a great event.

We are constantly working on improving our cowherd and will continue to do so by utilizing superior genetics and proven cow families.

Our bull battery includes Pay It Forward, Royal, Zuko and Harry are out on cows. Accelerator, Frosty, Patron, Potential and Powerman have also been breeding cows. We have made a slight shift in our percentages, as you may have seen. Using more Brahman genetics and then using new Simmental genetics to bring us back to the purebred Simbrah. These cattle have been doing a lot better in the warmer drier conditions we have been experiencing lately.

We have a joint lot in the sale with Smith Genetics and we're very proud of her. We look forward to visiting with you at the sale. We will be awarding our second family scholarship and we're excited about that.

Enjoy Synergy XVI, pray for rain and stay safe.

The Nieschwietz Family-Marilyn, Pete Jr. and Jeanette



## BURCH CATTLE

Greetings from Burch Cattle. The past 12 months have been a weather roller coaster in Oklahoma. We were feeding hay a year ago and this year we have been blessed with rain and are in good shape going into the fall. The Simbrah cattle continue to thrive in Oklahoma including in the winter. As we continue to build our numbers, our

quality is also improving. This is a direct result of our herd sires Smith Born to Dare and Smith Intrigue. We currently have the best calf crop we have ever had due with the help of these sires. That includes a set of twin heifer calves. We have also begun to sell meat private treaty and the response to Simbrah beef has been very positive. We are excited about the future of our program and look forward to Synergy and the future of the Simbrah breed.

## HENSGENS BROTHERS CATTLE

The Hensgens family has had a lot to be thankful for lately! Our family picture is from the wedding of Tony & Pam Hensgens' daughter, Michelle Hensgens Adams. We are once again excited to be part of the Synergy Sale and Showcase and thank the whole Smith Genetics crew for their dedication! Due to a wedding, we will not be able to be there in person this year, but we have a jointly owned lot in the sale.



Despite the challenging and ever changing times we are in, we have had much success in and out the ring. Our Simbrah and Brahman cattle have excelled and been at the top at many shows across the south! We are happy to see our customers and genetics succeed in the ring, in production and on the sale block. The future is bright in the cattle business and the people even greater!

We hope to see and hear from everyone this fall as we all look to move our programs and SimGenetics forward in a positive direction!

## MONTE CHRISTO CATTLE CO.

What a time to be in the cattle business! Record high input cost like fertilizer and feed. Record high temperatures like 113 degrees in early June. Record low reservoir levels in Amistad and Falcon. Record high fat cattle prices. Record low overall U.S. cattle herd inventory. Record high demand for premium beef. Everywhere we look, we see some kind of new record for something both good and bad.



Monte Christo has the most calves ever produced, and we also achieved the lowest ever calving frequency of 389 days on all mature cows. We're excited and enthusiastic about constantly improving our herd. As always, we strive to produce the most fertile and efficient cattle possible.

Our offering, this season presents heifers that will calve at 27+ months of age as we have come to believe the extra 4 to 5 months of development rewards our patience with virtually no calving problems and greatly improved overall herd conception rate.

We would like to thank Tim, Martha and the rest of the Synergy team for continuing to provide a popular venue to present our family's offering to the public. The longevity of the Synergy event is not only a testament to the quality of the effort of the team, but also the quality of the cattle represented by each family's sale cattle.

Margie, Mike and I look forward to another successful event!





## MCCRARY FARMS

This year marks our 27th year as Simbrah and Simmental breeders and we could not be more excited for the quality offering in Synergy XV1. Mark and I continue working to improve the quality of our herd by strategically utilizing the optimal sire power both breeds have to offer. Take a holistic view of our herd

pedigrees and you will find the influence of many breed greats. We are long-time proponents of the Simbrah youth development programs and have been avid supporters and sponsors of many FFA and 4-H events. Our farm is located in the northeast corner of Texas just south of DeKalb. We are just a few miles from the Oklahoma, Arkansas, Louisiana borders near Texarkana-you are welcome to come by and see our cattle at any time. We consider ourselves fortunate to be members of the Synergy group and a special THANK YOU goes out to Tim Smith and the Smith Genetics Team, who continuously works hard to make Synergy the event of the year!



## TMP LIVESTOCK

Welcome to Synergy XVI!

TMP are located in Henderson, Texas, where we produce quality sim-genetic cattle, as we have since 2010. Our cow families include matrons like Smith The Next Bella and Smith Priceless Gem along some new young cattle from whom we expect great things. We are excited to have added our new young herd sire, Smith TMP

Cast no Doubt 377J, a bull developed within our breeding program.

We have two lots in the sale this year, offered with Smith Genetics. Both are quality breeding prospects with exciting futures and with the possibility of also being show calves. Both heifers bring some solid and exciting genetics to the table. You can read more about each of these calves in our sale lot notes.

Both heifers come with the benefits of our junior program as well as Smith Genetics' junior program - support at every major stock show, guidance for feeding and showmanship, answers to any questions from our junior showmen and their parents, and access to Smith Genetics bull battery. We welcome scramble certificates, too! Ask us about the services we can provide. Give us a call to visit or check us out on Facebook at @TMP Livestock Company.



## FRALISE FARM AND RANCH, LLC/TRIPLE J RANCH

On our farm, we strive to raise cattle that are gentle, hardy, structurally correct and able to perform off the land. We have gone to a forage based, intensive rotational grazing program. We want cattle that can go to the show and that will be able to thrive on pasture later as breeding adults. We have an extensive heifer development program aimed at the replacement female. We continue to improve the quality of our herd through the introduction of superior Simbrah genetics. Through sire

power and the influence of proven cow families we continue to capitalize on some of the best Simbrah has to offer. A special thank you to Tim Smith, for your guidance, mentorship, and invitation to participate in Synergy. We will not have cattle in this year's sale, as we have been faced with a lot of challenges, but rest assured we will be back.

## REAVIS FARMS

We are proud to be entering our 36th year as Simbrah breeders. We believe the future of Simbrah has unlimited potential still after all these years.

We have incorporated new genetics this past year with the introduction of new bulls in our program. And we use top Simmental sires to infuse more new genetics to improve our EPDs and carcass traits. Our other bulls continue to perform at the top of the Rio Grande Valley Beef Improvement Gain Test and we have sold more bulls this year than ever before.

As we continue to grow our herd, we strive to produce cattle that will thrive in a variety of environments from tough range conditions to the show ring.

We are a diversified family farm operation with grain, corn, cotton and sunflowers, watermelons and our emphasis remains on producing sweet 1015 onions.

We hope you come by and look at our cattle. We think they could good additions to your program.

Special thanks to Martha Garrett for all she does for us and the Simbrah breed. Las but not least, we would also like to thank Tim Smith for all his hard work and dedication to the Simbrah breed for so many years. We look forward to seeing everyone at Synergy XV.



## STRACK FARMS

Our family has been in the Simbrah business since 1983, but the Stracks have always been involved in agriculture since their family arrived from Germany in 1845. For a number of years, we also fed consumers at our family restaurant in Spring, Texas. The ranch was started by my dad, Don and his brother, Ernie and myself (Keith). Today, my dad and I continue to operate the registered program as Ernie recently passed away.

We are located in the Marquez/Normangee area of central Texas and it is home to about 125 head of Simbrah cows. We made our first purchases in 1983. Over the years, we have seen a number of our cattle excel in the show ring for junior customers and we have been actively involved in the Texas Simmental/Simbrah Association and the area associations within the state. We have been blessed to market our cattle over the years to domestic customers and have sold into Mexico, Costa Rica and Brazil.

This is our fifth year to be involved in Synergy and we feel like we have selected some of our absolute best for this event. We look forward to seeing you Sept. 23-24th and enjoying good Simbrah cattle.



## SMITH GENETICS

Year 16 and we're still here. The event has continued to be successful because of the elite genetics we offer and the predictability of our cow families. It's been a great experience for us and contributes to our excitement for the breed. We are proud to serve as hosts and look forward to this annual event.

Smith Genetics strives to be a progressive breeder and we diligently use genomic data to complement visual appraisal of our herd. We have continued to hold our annual Smith Genetics Cow Camp for junior and new breeders. We are extremely proud to work with these junior exhibitors, their families and breeders. Our genetics continue to excel in the show rings of the junior and open shows.

Smith Genetics includes an IVF ET transplant center, powered by Vytelle, Simbrah and Simmental cattle in both Texas and Kentucky, as well as a registered horse division in Tim's home state of Kentucky. Tim's family maintain the Kentucky division and they are expanding the number of cattle in their operation.

Our offering includes members of the Bella Bella, Priceless, Diva, She Moves, Pure Diamond, and 770P-R770 Cow Families, to name a few. We have a number of exciting sires that we are featuring including, Smith Steppin' Up Your Game, Smith Follow My Lead, Smith Like Never Before 328G and Something In Red (SIR). They join our powerful group of proven sires including Satisfies, Practical 42D, Smith Have No Fear, Smith Made Solid, Lubbock, Crockett, Luke Benjamin, to mention a few.

We invite you to follow us on Facebook and check out our website. We are thankful to each for your part and we are proud to host Synergy. We think we've got some really good ones.



## Using Indexes to Advance Your Program

*By Wade Shafer*

Economic selection indexes were first introduced by Iowa State scientist, Lenoy Hazel, in 1943. Best described as "genetic accounting", economic indexes blend an animal's genetic levels along with commodity prices to predict the impact the animal will have on profit when used for breeding. Economic indexes have long been accepted by animal geneticists as the most effective means of making genetic progress for profit and, consequently, have been heavily utilized by the pig, poultry and dairy industries for years. Not surprisingly, the genetic progress made on those species through the use of indexes has been phenomenal—far eclipsing the progress made in beef cattle. By using ASA's All Purpose and Terminal Indexes, you too can leverage the power of the economic selection index - there is no better tool in the beef industry for making selection decisions!

**THE CURRENT SIMBRAH AVERAGE FOR API 86.0**

**THE CURRENT SIMBRAH AVERAGE FOR TI 56.0**

*Sale will be carried on*

**DVAUCTION.COM**

Please register with them if you plan to view, bid or buy online.





# SEPTEMBER 23-24 • SMITH GENETICS, GIDDINGS, TEXAS

## Cattle purchased Saturday PM can show on Sunday AM.

Showmanship is Saturday, Show is Sunday in this order: % Simmental, Purebred Simmental, % Simbrah and Purebred Simbrah.

# Synergy Showcase XVI



### PREMIUMS AND CLASSES

\$15,000 in prizes and premiums = \$7,500 in showmanship with five age divisions, paying ten places per division in an effort to spread the premiums plus \$7,500 in the heifer shows.

Skill-A-Thon and Sales Talk competitions will be held Saturday afternoon, before Showmanship. There will be three age divisions: junior 12 and under; intermediate 13-15; and senior 16-19. These two competitions are open to all youth and do not have an entry fee. You do not have to pre-enter, just be there at noon to compete.

### SHOWMANSHIP: TO BE HELD ON SATURDAY, 12:30 PM

Five age divisions

(Age of exhibitor as of 9/23/23)

9 and under

10 – 11

12 – 13

14 – 15

16 and over

Each Division Showmanship Champion will receive a buckle. Showmanship prize money for each age division is as follows:

- 1st Place \$300
- 2nd Place \$250
- 3rd Place \$200
- 4th Place \$150
- 5th Place \$100
- 6th Place \$75
- 7th Place \$50
- 8th Place \$25
- 9th Place \$25
- 10th Place \$25

### UNOFFICIAL CLASS BREAKS FOR PUREBRED

HEIFER SHOW (Official classes will be completed after all entries are received):

Class 1 – May 2023 and younger

Class 2 – April 2023

Class 3 – March 2023

Class 4 – Feb. 2023

Class 5 – Jan. 2023

Class 6 – Calf Champion

Class 7 – Reserve Calf Champion

Class 8 – Nov. – Dec. 2022

Class 9 – Sept. – Oct. 2022

Class 10 – May – Aug. 2022

Class 11 – Junior Champion

Class 12 – Reserve Junior Champion

Class 13 – March – April 2022

Class 14 – Jan. – Feb. 2022

Class 15 – Sept. – Dec. 2021

Class 16 – Senior Champion

Class 17 – Reserve Senior Champion

Class 18 – Grand Champion

Class 19 – Reserve Grand Champion

### PREMIUMS ON SYNERGY HEIFER SHOWS:

#### Purebred Show:

- Grand Champion Purebred Simbrah receives \$3,000.
- Reserve Grand Champion Purebred Simbrah receives \$1,500.
- All Class Winners receive an award.

#### Percentage Shows:

- Grand Champion and Reserve Grand Champion Percentage Simmentals and Percentage Simbrahs will receive cash awards. Amount will be determined based on number of entries.
- All Class Winners receive an award.

#### Simmental Show:

- Grand Champion and Reserve Grand Champion Simmentals will receive cash awards. Amount will be determined based on number of entries.
- All Class Winners receive an award.

## SHOWCASE XVI ENTRY CARD

### HEIFER MUST HAVE BEEN PURCHASED FROM SYNERGY PARTICIPANT TO SHOW

Please send copy of registration paper with entry. DEADLINE SEPTEMBER 10, 2023.

Exhibitor Name: \_\_\_\_\_

Parents Name: \_\_\_\_\_

Mailing Address: \_\_\_\_\_

City, State, Zip: \_\_\_\_\_

Jr's Social Security #: \_\_\_\_\_ Jr's Age as of 9/23/23: \_\_\_\_\_

Area Code/Phone #: \_\_\_\_\_ Email Address: \_\_\_\_\_

Animal Purchased From: \_\_\_\_\_

CIRCLE BREED: % Simmental Simmental % Simbrah Simbrah

Animal's Name: \_\_\_\_\_

Animal's Date of Birth: \_\_\_\_\_ ASA Registration #: \_\_\_\_\_

Exhibitor's Signature: \_\_\_\_\_

Parent's Signature: \_\_\_\_\_

TSHIRT SIZE - we will do our best to have your size, but cannot guarantee on entries that arrive after September 10. Check ONE!

YOUTH \_\_\_\_\_ Large \_\_\_\_\_ XL  
ADULT \_\_\_\_\_ Small \_\_\_\_\_ Medium \_\_\_\_\_ Large \_\_\_\_\_ XL

Return Entry Cards and Entry Fee (\$100 MADE PAYABLE TO SYNERGY) to:  
Smith Genetics, PO Box 330, Giddings, TX 78942

SKILL-A-THON AND SALES TALK COMPETITION ON 9/23. OPEN TO EVERYONE. NO ENTRY FEE.  
SHOWMANSHIP ON 9/23 AND SHOW ON 9/24.  
ENTRY FEE OF \$100 REQUIRED AND INCLUDES BOTH SHOWS.

Entry Fee of \$100 per head, made PAYABLE TO SYNERGY, must accompany this signed and fully completed card.


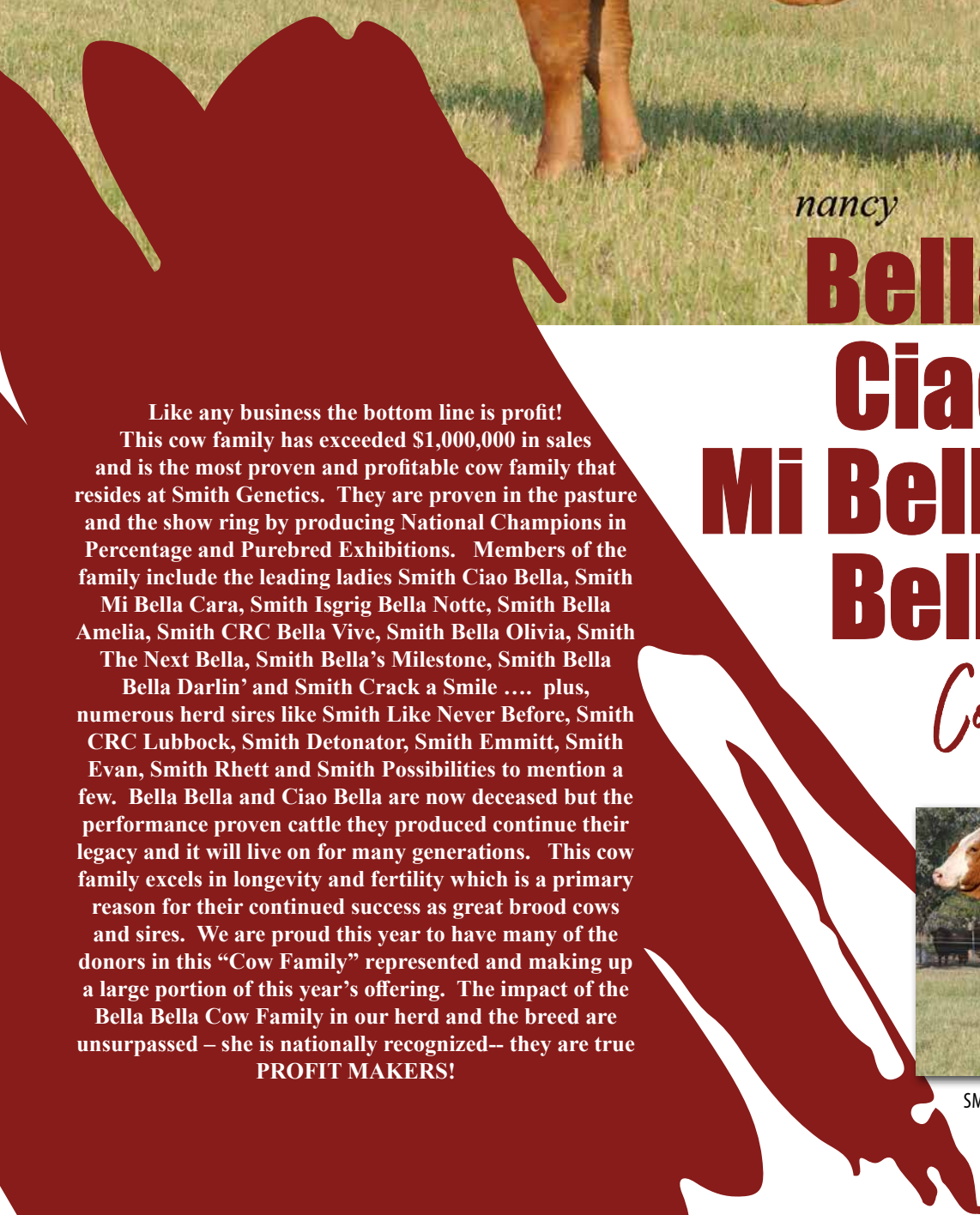
All cattle entries need to be checked in SATURDAY, 9/23/23, by NOON. Only cattle purchased SATURDAY night will be allowed to enter/check in on SUNDAY, 9/24/23 by 8:00 AM. Junior buyer will pay entry fee of \$100 on purchases made from the sale.

Questions can be directed to:  
Tim Smith • 512-587-7896 or  
smithgenetics1@gmail.com

Disclaimer: I (We) agree to release the Synergy Participants, it's employees, representative, agents, assignees and Smith Genetics from any claim or loss to me, my employees, animals or equipment, and agree to indemnify and hold the Synergy Participants and Smith Genetics harmless from any liability it may incur because of my actions or inaction either solely or with others (including the Synergy Participants and Smith Genetics) which results in injury to any person, animal or property.

Each animal entered in the Synergy Showcase shall be subject to DNA testing as deemed necessary at the discretion of the show coordinators. All Grand and Reserve Champions will be DNA tested prior to receiving awards. DNA results must match the registration number provided by exhibitor on the entry card.





SMITH BELLA BELLA 326R

*nancy*

# Bella Bella- Ciao Bella- Mi Bella Cara- Bella Notte *Cow Family*

Like any business the bottom line is profit! This cow family has exceeded \$1,000,000 in sales and is the most proven and profitable cow family that resides at Smith Genetics. They are proven in the pasture and the show ring by producing National Champions in Percentage and Purebred Exhibitions. Members of the family include the leading ladies Smith Ciao Bella, Smith Mi Bella Cara, Smith Isgrig Bella Notte, Smith Bella Amelia, Smith CRC Bella Vive, Smith Bella Olivia, Smith The Next Bella, Smith Bella's Milestone, Smith Bella Bella Darlin' and Smith Crack a Smile .... plus, numerous herd sires like Smith Like Never Before, Smith CRC Lubbock, Smith Detonator, Smith Emmitt, Smith Evan, Smith Rhett and Smith Possibilities to mention a few. Bella Bella and Ciao Bella are now deceased but the performance proven cattle they produced continue their legacy and it will live on for many generations. This cow family excels in longevity and fertility which is a primary reason for their continued success as great brood cows and sires. We are proud this year to have many of the donors in this "Cow Family" represented and making up a large portion of this year's offering. The impact of the Bella Bella Cow Family in our herd and the breed are unsurpassed – she is nationally recognized– they are true **PROFIT MAKERS!**



SMITH TULIPE 765L-DAM OF BELLA BELLA





SMITH CIAO BELLA 321W-BELLA BELLA DAUGHTER



SMITH ISGRIG BELLA NOTTE-BELLA BELLA DAUGHTER

# The Power of the Cow



SMITH MI BELLA CARA 312Z-BELLA BELLA GRANDDAUGHTER, CIAO BELLA DAUGHTER



SMITH BELLA BELLA ALMA 623J-BELLA BELLA DAUGHTER





SMITH BELLA AMELIA 526B-BELLA BELLA DAUGHTER



SMITH CRACK A SMILE 805H-BELLA BELLA GRANDDAUGHTER



SMITH THE NEXT BELLA 321B- BELLA BELLA GRANDDAUGHTER, CIAO BELLA DAUGHTER



SMITH CRC BELLA VIVE 36Z-BELLA BELLA DAUGHTER



SMITH DETONATOR-BELLA BELLA GRANDSON, CIAO BELLA SON



SMITH CRC LUBBOCK-BELLA BELLA GRANDSON, BELLA VIVE SON



SMITH LIKE NEVER BEFORE 328G-BELLA BELLA GRANDSON





LOT 1



## SMITH BELLA BELLA DARLIN` 326L

Owner: **Smith Genetics/McCrary**  
ASA#: 4233818 Polled 3/4 SM 1/4 BR Cow  
Tattoo: 326L BD: 1/22/2023

Indexes:	API	TI
Percentile Ranking:	92.1	64.9
	30%	10%

W/C EXECUTIVE ORDER 8543B  
SIRE: **OBCC CMFM DEPLORABULL D148**  
LAZYH/ADKINS BLKSTAR Z15

SMITH NU WAVE  
DAM: **SMITH BELLA BELLA**  
SMITH TULIPE 765L

**Selling ½ interest and ½ possession with option to double the bid and own 100%.**

Groundbreaking introduction of a new mating in the Bella Bella Cow Family – this three-quarter donor prospect is sired by Deplorabull, who was campaigned successfully by the Owen Bros and Circle M Farms Simmental programs. The first of this genetic combination and we

are proud to be sharing these cutting-edge genetics with fellow breeders. Proven Cow Families are where the profit is made, and they don't get more proven than THE BELLAS. Destined for the donor pen - study her and you will respect the power and femininity she possesses as an individual to compliment the royalty of her pedigree and the ranking of her top indexes, 30% API and 10% TI. This percentage heifer qualifies for all the junior benefits we offer and as joint owners it opens our entire bull battery up for future matings on this leading lady. The embryo bank is limited, so take advantage of owning a direct daughter of the breed great "Bella Bella" – the successful bidder on this female will not regret raising their hand! **Open.**



LOT 2

2

## SMITH BELLA SOMETHING 321K

Owner: **Smith Genetics**  
 ASA#: 4233810 Polled PB Simbrah Cow  
 Tattoo: 321K BD: 5/8/2022

Indexes:	API	TI
Percentile Ranking:	71.7 99%	58.8 35%

SMITH NF SIMPLY GREAT  
**SIRE: SMITH SATISFIES**  
 SMITH GREY MIST

SMITH NU APPROACH  
**DAM: SMITH CIAO BELLA**  
 SMITH BELLA BELLA

Opportunity to own a full sister to Smith Mi Bella Cara and Smith Detonator – proven donor and/or herd sire at Smith Genetics! Satisfies will go down in the history book as one of the top cow producing bulls in the breed because of the milking ability and fertility. There is no guesswork in the potential of this genetic mating because it has worked over and over and over again. The built-in promotion on this heifer is unsurpassed and keep in mind you get two additional straws of semen from our herd bull battery to use on future matings with this donor prospect. All the guesswork has been taken out – easy choice to purchase if you're looking for cow power! **Pasture exposed to Smith Isgrig Something In Red ASA #408479 from 8/19/23 to sale day.**



LOT 3

**Selling ½ interest and ½ possession with option to double the bid and own 100%.**

We are thrilled with the meat, muscle, and cow power expressed by Bella Memories and it was no accident – we combined the Bella Bella and Diva Cow Families here and proud of the outcome! Our sale topper in 2021, Smith Bella Amelia Ann 188H, was also a combination mating from these two families and ask her owners, the King Family from 3JK Ranch, what they think of their donor cow and her first calves – powerhouses that will be on the show circuit! She qualifies for all our benefits and can show on Sunday in addition to the next Superbowl event. Remember with one-half interest it opens our entire bull battery up for all future matings! Front pasture kind that you're proud to show off! **AI'd to Smith Follow My Lead ASA #3997767 on 8/17/23.**



SMITH BELLA AMELIA ANN 188H-PATERNAL SISTER TO LOT 4 AND ALSO A DESCENDANT OF BELLA BELLA

3

## SMITH BELLA MEMORIES 213K

Owner: **Smith Genetics**  
 ASA#: 4233808 Polled PB Simbrah Cow  
 Tattoo: 213K BD: 4/9/2022

Indexes:	API	TI
Percentile Ranking:	85.5 55%	57.6 40%

SVF STEEL FORCE S701  
**SIRE: SMITH HAVE NO FEAR 909B**  
 LMC MISS DIVA

SMITH SATISFIES  
**DAM: SMITH MI BELLA CARA**  
 SMITH CIAO BELLA



4

## SMITH 334Z EYES ON BELLA 334K

Owner: **Smith Genetics**  
 ASA#: 4233966 Polled PB Simbrah Cow  
 Tattoo: 334K BD: 7/16/2022

Indexes:	API	TI
Percentile Ranking:	87.1	59.0
	50%	35%

WLE TWANG Z547 SMITH SATISFIES  
 SIRE: SMITH NO BETTER THAN THIS DAM: SMITH BELLA SOGNA 334Z  
 SMITH TULIPE WAVE 62W SMITH CIAO BELLA

This young donor to be offers an impressive all-around design and high utility build. Capitalize on the lineage of this female and note, she is sired by the Smith No Better Than This bull that just produced the 2023 Reserve Houston International Female, Smith 4S Kayla Charming Emmy Lu, campaigned by the Sansom Family. The dam of 334K is a full littermate to Smith Mi Bella Cara and they have both earned their way to our donor pen. You will appreciate the volume and substance of this heifer backed by a balanced EPD ranking of the top 50% and 35% of the breed for API (All Purpose Index) and TI (Terminal Index) respectively. LOTS A COW POWER! AI'd to Smith Follow My Lead ASA #3997767 on 8/4/23. Pasture exposed to Smith Isgrig Something In Red ASA #408479 from 8/19/23 to sale day.



LOT 4

5

## SMITH 327 BELLA ELIZABETH 327K

Owner: **Smith Genetics**  
 ASA#: 4234122 Horned 3/4 SM 1/4 BR Cow  
 Tattoo: 327K BD: 10/18/2022

Indexes:	API	TI
Percentile Ranking:	98.2	64.9
	20%	10%

WHF DEVILS CUT A245 MR HOC BROKER  
 SIRE: SMITH PRACTICAL 42D DAM: SMITH BELLA DONATELLA  
 SMITH RED IRENE 133A SMITH BELLA BELLA

Put a STAR next to this lot!! Beautiful female that not only has all the structural correctness and performance exhibited by ranking in the top 20% of the breed for API and 10% for TI but she is out of the Broker daughter, Smith Bella Donatella. Look at her extreme femininity and balance - remember she qualifies for all of Smith Genetics junior benefits if you choose to show her. Great donor prospect with breed notoriety bred in, making her a sound investment! **Open.**



LOT 5

6

## SMITH BELLA SUNNY TIMES 372K

Owner: **Smith Genetics**  
 ASA#: 4233975 Horned PB Simbrah Cow  
 Tattoo: 372K BD: 9/12/2022

Indexes:	API	TI
Percentile Ranking:	100.0	65.9
	15%	10%

WHF DEVILS CUT A245 SMITH SATISFIES  
 SIRE: SMITH PRACTICAL 42D DAM: SMITH BELLA SUNSHINE 327F  
 SMITH RED IRENE 133A SMITH BELLA DONATELLA

Here is a 4th generation Bella Bella family member that possesses the same femininity throughout her front one-third that has been a trademark for this cow line. These type of replacement females with the built in pedigree recognition and cow power are hard to find. Don't forget the buyer receives two additional straws of semen from our bull battery for future use on this young female. Look at her EPDs - top 15% API and 10% TI - really balanced. Here is a multi-purpose Practical daughter that has the show ring look and pasture performance to produce future breed greats! **Open.**



LOT 6



**Selling ½ interest and ½ possession with option to double the bid and own 100%.**

BABY DOLL! Let's talk lots of eye appeal, class and loaded with talent. Lots of positive ways to describe the presence of this future breed great. A forward thinking breeder or junior family should truly study the attributes of this lady. This heifer is a maternal sister to the donor owned with the Sandifer family, Smith Olivia's Bella 21F, that went on to produce the 2022 Houston International Champion, Smith Sandifer Lovely Lady May, now a donor for the Thorp Family. Pay attention here buyers, she has all the potential as a show heifer and a donor prospect. Take advantage of all Smith Genetics benefits and semen offers. Better STUDY this one closely!  
**Open.**



LOT 7



## SMITH 21B BELLA HALEY 21L

Owner: **Smith Genetics**  
ASA#: 4233859 Polled PB Simbrah Cow  
Tattoo: 21L BD: 2/26/2023

Indexes:	API	TI
Percentile Ranking:	86.9	57.8
	50%	40%

WLE TWANG ZS47  
SIRE: SMITH NO BETTER THAN THIS  
SMITH TULIPE WAVE 62W

SMITH SATISFIES  
DAM: SMITH BELLA OLIVIA 21B  
SMITH BELLA BELLA



SMITH SANDIFER LOVELY LADY MAY-2022 INTERNATIONAL CHAMPION FEMALE AND A FAMILY MEMBER OF LOT 7

# Smith Family SCHOLARSHIP LOT



SMITH EASY LIKE 21J-SIRE OF LOT 8 EMBRYOS



SWEET BELLY TRUDY 232J-DAM OF LOT 8 EMBRYOS



## TWO SEXED FEMALE IVF EMBRYOS

Owner: Smith Genetics

Polled PB Simbrah Embryos

Indexes:	API	TI
Percentile Ranking:	100.9	66.3
	15%	10%

SMITH NO BETTER THAN THIS

SIRE: SMITH EASY LIKE 21J

SMITH WLTMS MISS ELLIE

LLSF PAYS TO BELIEVE ZU194

DAM: SMITH SWEET BELLA TRUDY 232J

SMITH SWEET BELLA

Selling two sexed IVF female embryos with a minimum guarantee of one pregnancy (no maximum) if implanted by a certified technician. The guarantee becomes void after two years from sale date. One-half of the proceeds from this lot will go to the Smith Genetics Family Scholarship Fund. Mom went to heaven this year and is dearly missed. Gertrude T. Smith, was also nicknamed Trudy, thus the dam's namesake. I am proud to be the son of such a special lady!



GERTRUDE T. SMITH

GERTRUDE WITH HER GREAT GRANDKIDS



PAUL AND GERTRUDE  
SMITH-KENTUCKY BEEF AND  
TOBACCO FARMERS



SHE HAD A PASSION FOR PLAYING GAMES

## Farmer's Wife

God looked down on his planned paradise and said, "The farmer needs a caretaker". So, on the 9th day, God made a Farmer's wife.

God said, "I need somebody willing to get up before dawn, feed the farmer, work all day in town, come home to work alongside her farmer, make supper, and then go to town and stay past midnight at a meeting of the schoolboard". So, God made a Farmer's wife.

God said, "I need somebody willing to sit up all night with their newborn babies and raise them right. I need somebody who can use a wrench and know where to find it, doesn't mind getting dirty, who can remove stains, and keep a house clean. And when its planting time and harvest season, cooking, cleaning, taking care of the kids, the fieldwork, putting in 115 hours a week." So, God made a Farmer's wife.

God said, "I need somebody strong enough to clean out bins and heave bails, yet gentle enough to raise kids, grand kids, and bottle feeds calves and tend to the house, who will drive the tractor and always pray to God about the weather. It had to be somebody who'd be able to handle the house and fieldwork and not cut corners. Somebody to seed, weed, feed, breed, and wash and dry, and cook and clean, and remember scheduled events, and feed the farmer, and stock the cupboards, and can everything, finish a hard week's work with a five-mile drive to Sunday Mass. So, God made a Farmer's wife.

"Somebody who'd bale a family together with the soft strong bonds of sharing, who would laugh and then sigh, and then reply, with smiling eyes!" So, God made a Farmer's wife.





SMITH PRICELESS

*nancy*

The Priceless Cow Family has produced over half a million in genetic revenue and continues to grow in breed recognition for their performance strength in and out of the show ring.

Daughters like Detonation and Gem are following the footsteps of the breed matriarch. This cow family transmits the same style and beauty in each generation – Priceless’s barn name “Goose” continues to resonate with those that her saw her showing because she was a beautiful fronted female. Priceless has numerous daughters and granddaughters in production including Smith Priceless Passion, Smith Hi Price and Priceless Wish owned with McCrary Farms, Smith Priceless Gem owned with Temperance Cattle Company, Smith Johnson Top Price raised and owned with Johnson Cattle, Smith Priceless Vanity owned with 7N Ranch, Smith McCrary Rhythm owned by La Familia Ranch, Smith TMP Oh Priceless owned with the Glueck Family, Smith JCC Priceless Goodness owned with the Butler Family and the list goes on. This family has produced herd sires including Fireball, Luke Benjamin, and Smith Price Just Lookin 037J. The mark of a true cow family is the production of herd sires and breed matrons that have gained the respect of fellow breeders and commercial cattlemen alike. This cow family continues to grow and check all the boxes including breeder recognition!



SMITH MCCRARY FIREBALL-PRICELESS GRANDSON



SMITH LUKE BENJAMIN-PRICELESS GRANDSON. DETONATION SON.





SMITH PRICELESS GEM 377A-PRICELESS DAUGHTER



SMITH TMP OH PRICELESS 377H-PRICELESS GRANDDAUGHTER. GEM DAUGHTER.

## The Power of the *Cow*



SMITH SWFS DETONATION-PRICELESS DAUGHTER

# Priceless-Detonation- Top Price-Gem *Cow Family*

Selling two sexed IVF female embryos with a minimum guarantee of 1 pregnancy (no maximum) if implanted at Smith Genetics. The guarantee becomes void after two years from sale date.

The Detonation cow has earned her way to the forefront of this cow family by producing herd sires like Luke Benjamin and Just Lookin - in addition to the full sister to these embryos selling as lot 10 – Priceless Thoughts. Instead of me describing the potential of these embryos just take a look at Lot 10 and you will see their true values! The Made Solid daughters continue to win in the pasture and the show ring – the guesswork is removed from this mating!



SMITH SWFS DETONATION-DAM OF LOT 9 AND LOT 10

9

## TWO SEXED FEMALE IVF EMBRYOS

Owner: **Smith Genetics**

Polled PB Simbrah Embryos

Indexes:	API 93.6	TI 64.8
Percentile Ranking:	30%	10%
CNS DREAM ON L186		
SIRE: SMITH MADE SOLID	SMITH DETONATOR	
SMITH INSPIRED ANNIE	DAM: SMITH SWFS DETONATOR 321A	
	SMITH PRICELESS	

10

## SMITH PRICELESS THOUGHTS 307K

Owner: **Smith Genetics**

ASA#: 4105018

Polled PB Simbrah Cow

Tattoo: 307K

BD: 5/5/2022

Indexes:	API 82.4	TI 60.1
Percentile Ranking:	65%	30%
CNS DREAM ON L186		
SIRE: SMITH MADE SOLID	SMITH DETONATOR 321A	
SMITH INSPIRED ANNIE	DAM: SMITH SWFS DETONATION	
	SMITH PRICELESS	



LOT 10-AND ALSO A FULL SISTER TO LOT 9 EMBRYOS

**Selling ½ interest and ½ possession with option to double the bid and own 100%.**

When you come to SYNERGY each September, you expect to find donor prospects just like this one. Royally bred from an elite cow family, moderate in her design with unmatched look, great set of running gear and sired by cutting edge genetic bulls. Keep in mind by owning jointly you have access to our entire herd bull battery for natural and embryo matings. Progressive breeders need to notice the cow power, sire power, performance power and maternal power she possesses. Here's a Made Solid daughter that checks all the boxes and the best part – she is built for years and years of production. AI'd to Smith Steppin' Up Your Game ASA #3624619 on 6/29/23. Safe in calf.





LOT 11



SMITH JCC I'M A TOP CHOICE 917D-DAM OF  
LOTS 11 AND 12



SMITH JCC UNFORGETTABLE CHOICE-FULL  
SISTER TO LOTS 11 AND 12



LOT 12

## 11 SMITH JCC LADY CHOICE 719L

Owner: **Smith Genetics/Johnson**  
ASA#: 4233850 Polled PB Simbrah Cow  
Tattoo: 719L BD: 1/22/2023

Indexes:	API	TI
Percentile Ranking:	83.3	57.3
	65%	45%

WLE TWANG Z547  
SIRE: SMITH NO BETTER THAN THIS  
SMITH TULIPE WAVE 62W

SMITH DETONATOR 321A  
DAM: SMITH JCC TOP CHOICE  
SMITH JOHNSON TOP PRICE

**TOUGH DECISION!** You be the judge of which of these spring born flush sisters you like better. Super at the ground, big ribbed and elegant in their design, both have dimension and body. They are full sibs to the 2022 Cattlemen's Congress Heifer Calf and National Reserve Heifer Calf owned with J&L Cattle named Unforgettable Choice, who is now in our jointly owned donor pen! Tremendous pedigree, balanced EPDs and a phenomenal cow family secure the productive future of these leading ladies. They can show on Sunday morning at the Showcase and qualify for all of Smith Genetics buyer benefits! Elite Genetic Offering! **Open.**

## 12 SMITH JCC IM`A TOP CHOICE 917L

Owner: **Smith Genetics/Johnson**  
ASA#: 4233851 Polled PB Simbrah Cow  
Tattoo: 917L BD: 2/9/2023

Indexes:	API	TI
Percentile Ranking:	83.3	57.3
	65%	45%

WLE TWANG Z547  
SIRE: SMITH NO BETTER THAN THIS  
SMITH TULIPE WAVE 62W

SMITH DETONATOR 321A  
DAM: SMITH JCC TOP CHOICE  
SMITH JOHNSON TOP PRICE



*nancy*

TRIPLE P JULIET-DAM OF LOT 13 EMBRYOS



SMITH CRC AMBER KEEPSAKE B110-JULIET GRANDDAUGHTER



SMITH SOLID SPARK JULIET 215J-JULIET DAUGHTER

The Juliet Cow Family continues to add more top performing donors and sires each year because of their maternal power and this all follows their successful show careers. Now let's add to that the two herd sires: Smith Steppin' Up Your Game and Smith Adventurer. Family of CHAMPIONS -included in the lineup are two Houston Champion Females, Wentz Smith Superior in 2012 and Smith Wentz CRC Keepsake in 2014, plus don't forget Zachary Mills and his tremendous success with Smith Juliet 315A and Smith Juliet's Ashley 215F during the 2020 season – all donors! These winners are now keeping the tradition going with Smith J&L Superior Elegance in 2022 for the Ebert family and Smith Solid Spark Juliet 215J in 2023 for the Sansom family. Strong Maternal and Bull Power in this Cow Family line up that has proven their value!

**Juliet-  
Superior-  
Keepsake**  
*Cow Family*



# The Power of the Cow



WENTZ SMITH SUPERIOR-DAUGHTER OF TRIPLE P JULIET. DAM OF LOT 15 EMBRYOS



SMITH SWFS JULIET 315A-TRIPLE P JULIET DAUGHTER



SMITH FAR MORE 215F-TRIPLE P JULIET GRANDSON



SMITH ADVENTURER-WENTZ SMITH SUPERIOR SON



SMITH STEPPIN' UP YOUR GAME-WENTZ SMITH SUPERIOR SON. SIRE OF LOT 13 EMBRYOS

**Selling two sexed IVF female embryos with a minimum guarantee of 1 pregnancy (no maximum) if implanted at Smith Genetics. The guarantee becomes void after two years from sale date.**

This planned mating to Smith Steppin' Up Your Game proves our faith in the genetics of the Juliet Cow Family – this is a linebred mating with Juliet on both sides of the pedigree – intentional and not a mistake. The volume and substance on the Steppin' Up Your Game calves combined with the maternal look of the Juliet daughters will combine all the performance, rib shape, depth of body, and yet keep that beautiful feminine appeal. We have mated Juliet with multiple sires and she doesn't miss and the genetic makeup of her calves led me to make this linebreeding decision with total confidence. This could prove to be the best genetic investment in the sale!

13

## TWO SEXED FEMALE IVF EMBRYOS

Owner: Smith Genetics

Polled PB Simbrah Embryos

Indexes:	API	TI
Percentile Ranking:	88.3	64.2
	45%	15%

SMITH HAVE NO FEAR 909B  
SIRE: SMITH STEPPIN' UP YOUR GAME  
WENTZ SMITH SUPERIOR

SMITH WILDFIRE  
DAM: TRIPLE P JULIET  
TRIPLE P KIYA

WHAT A GENETIC LINE UP! Juliet X Deplorable. We really see the genetic value in  $\frac{3}{4}$  x  $\frac{1}{4}$  females and what they bring to the table. So, when we decided to mate Juliet to a Simmental bull we studied and landed on Deplorable because of his correctness, efficiency of his daughters in the pasture, and the moderate stature they exhibited in addition to structural soundness. IN AWE is not just a high pedigreed individual she is awesome made from the side, up headed and elegant with the look and awesome feet. She didn't have the best recipient momma in this drought, but she keeps getting better and better each day. Study her video for a true look next month. This heifer has the pedigree and pieces to be a great one. She qualifies for all our junior benefits and truly has some unique pedigree qualities! **Open.**



LOT 14



OBCC CMFM DEPLORABULL D148-SIRE OF LOT 14

## 14 SMITH JULIET IN AWE 215K

Owner: **Smith Genetics**  
 ASA#: 4233858 Polled 3/4 SM 1/4 BR Cow  
 Tattoo: 215K BD: 12/2/2022

Indexes:	API	TI
Percentile Ranking:	95.8 25%	66.3 10%

W/C EXECUTIVE ORDER 8543B SMITH WILDFIRE  
 SIRE: OBCC CMFM DEPLORABULL D148 DAM: TRIPLE P JULIET  
 LAZYH/ADKINS BLKSTAR Z15 TRIPLE P KIYA

## 15 TWO SEXED FEMALE IVF EMBRYOS

Owner: **Smith Genetics**  
 Polled PB Simbrah Embryos

Indexes:	API	TI
Percentile Ranking:	88.6 40%	65.4 10%

SMITH NO BETTER THAN THIS SMITH NU WAVE II  
 SIRE: SMITH EASY LIKE 21J DAM: WENTZ SMITH SUPERIOR  
 SMITH WLTRS MISS ELLIE TRIPLE P JULIET

**Selling two sexed IVF female embryos with a minimum guarantee of 1 pregnancy (no maximum) if implanted at Smith Genetics. The guarantee becomes void after two years from sale date.**

Superior needs no introduction but recently she has added two young herd sires, Steppin' Up Your Game and Adventurer, to our battery and their calves have been hitting it out of the park. The sire of these embryos, Smith Easy Like was the 2022 National Champion Simbrah bull and his first calves will be shown during the 2023 – 2024 season. We are very excited about the potential of this young bull who is out of our Eleanor Cow Family. The mating currently post the resulting calves will rank in the top 10% for TI, indicating a great performance base. The Houston Champion Superior mated to the National Champion Easy Like should not disappoint and the potential in this line up of genetics is unlimited.



SMITH EASY LIKE 21J-SIRE OF LOT 15 EMBRYOS



16

## SMITH JULIET'S KEEPSAKE 110K

Owner: **Smith Genetics**  
 ASA#: 4233970 Polled PB Simbrah Cow  
 Tattoo: 110K BD: 8/3/2022

Indexes:	API	TI
Percentile Ranking:	107.7	71.2
	10%	3%

WHF DEVILS CUT A245 SMITH SATISFIES  
 SIRE: SMITH PRACTICAL 42D DAM: SMITH CRC AMBER KEEPSAKE  
 SMITH RED IRENE 133A SMITH WENTZ CRC KEEPSAKE

**POWER!** She has that powerful, soft made look that will really impress you and backs it up with a great set of EPDs ranking in top 10% for API and 3% for TI - complete package. This 4th generation Juliet cow family member has a lot to offer the progressive breeder with her breed name recognition and built in maternal traits exemplified and noted in this family. Be sure and take advantage of our semen offer for future production. Qualifies for all our junior benefits and be sure and look at her award- winning dam's pic in the spread – notice the similarity! **Open.**



LOT 16

17

## TWO SEXED FEMALE IVF EMBRYOS

Owner: **Smith Genetics**  
 Polled PB Simbrah Embryos

Indexes:	API	TI
Percentile Ranking:	99.1	66.3
	15%	10%

WHF DEVILS CUT A245 SMITH SATISFIES  
 SIRE: SMITH PRACTICAL 42D DAM: SMITH JULIET'S ASHLEY 215F  
 SMITH RED IRENE 133A TRIPLE P JULIET

**Selling two sexed IVF female embryos with a minimum guarantee of 1 pregnancy (no maximum) if implanted at Smith Genetics. The guarantee becomes void after two years from sale date.**

Juliet's Ashley has earned her way to the donor pen by producing top indexing calves each year including her son, Smith Above Par, that we lost at a young age but realized his genetic potential. The Practical daughters in our herd have proven to be the COWMAN KIND -fertile, easy keeping and heavy milking. The potential of the resulting heifers from this sexed plan mating should have show and pasture appeal – plus they will rank in top 15% for API and 10% for TI – this is a no miss mating!



SMITH JULIET ASHLEY 215F-DAM OF LOT 17 EMBRYOS

SHE IS SPECIAL! This No Better Than This daughter just keeps getting better every day and she has that upheaded look that says, "take me to the show ring". You'll appreciate her sleek front end and smooth shoulder, but study the meat and muscle on this heifer when you see her in the flesh. Now add that dose of Juliet and Nu Wave on the dam side and you can see her come together with lot of style and balance. Check out her top ranking EPDs, including the top 10% ranking in CE, BW, and Carcass Merit Sheer! Qualifies for Superbowl and Synergy Showcase! Money making kind! **Open.**



LOT 18

18

## SMITH JULIET ASHLEY RENE 915K

Owner: **Smith Genetics**

ASA#: 4233855

Polled PB Simbrah Cow

Tattoo: 915K

BD: 11/8/2022

Indexes:	API	TI
Percentile Ranking:	90.4	62.5
	35%	20%

WLE TWANG Z547

SMITH NU WAVE II

SIRE: SMITH NO BETTER THAN THIS  
SMITH TULIPE WAVE 62W

DAM: SMITH JULIET ASHLEY 915C  
TRIPLE P JULIET



SMITH NO BETTER THAN THIS-SIRE OF LOT 18

**Vytelle**  
ALWAYS PROGRESSING  
Unlock animal performance with Vytelle.

**Smith GENETICS**  
POWERED BY **Vytelle**

Complete terms and conditions available at [vytelle.com/terms-and-conditions](http://vytelle.com/terms-and-conditions).  
©2022 Vytelle, LLC. All rights reserved. Vytelle and its logo are trademarks of Vytelle, LLC. 08/22 VY220304

## NOW YOU CAN ADVANCE YOUR GENETICS FASTER WITH IVF SERVICES AT SMITH GENETICS.

THE VYTELLE ADVANCE™ REVOLUTIONARY HORMONE-FREE IVF PROGRAM CAN BE USED ON HEIFERS AND COWS, BOTH OPEN AND PREGNANT, AT MORE THAN 20 SATELLITE LOCATIONS ACROSS THE UNITED STATES.

CONTACT SMITH GENETICS TO BOOK YOUR DONORS FOR AN UPCOMING OPU EVENT IN GIDDINGS, TEXAS.

SMITH GENETICS  
1316 PRIVATE RD 2231  
GIDDINGS, TX 78942, USA  
TIM SMITH  
512-587-7896

TO LEARN MORE ABOUT THE VYTELLE DIFFERENCE VISIT [WWW.VYTELLE.COM](http://WWW.VYTELLE.COM)




# The Power of the *Cow*

Synergy has long been a collection of the most influential and powerful Simbrah genetics available. Smith Genetics and friends have procured, raised and invested in cutting-edge cow families that have produced in both the pasture and show ring, all because of the **POWER** of the **COW**. Most of the participants' lots, beginning on page 52, are built on the same solid cow foundation as the Smith Genetics lots are. The top and bottom sides of the pedigrees are loaded with the best cow families in the Simbrah breed, as well as the service sires. Invest with confidence in the **POWER** of the **COW**.

Bringing you the *Quality, Pedigree and Power*







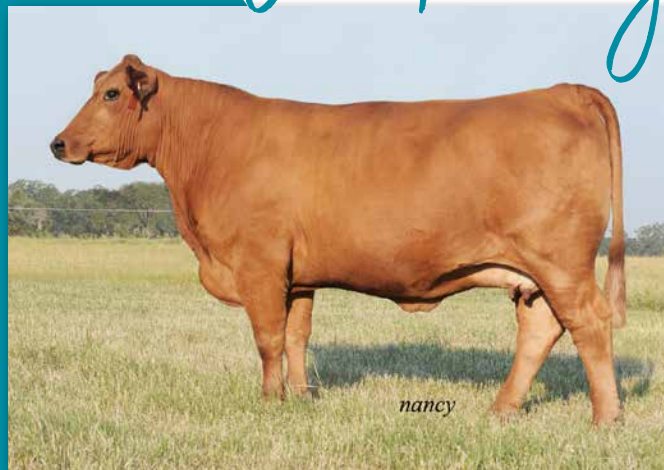
LMC BETM BARBIE 5Y/8-SHE MOVES  
DAUGHTER

*nancy*

# She Moves-Charming Moves-Tara Moves- Sheza Barbie

*Cow Family*

She Moves Cow Family is recognized as “A No Miss” family because no matter how you mate them the resulting product is GREAT! She produced many International Champions of both bulls and females with a highlight being the production of the 2013 International and Supreme American Champion in Houston, Smith Charming Moves shown by Kaleb Fontenot. Many champions in this family including National Champion Smith A.R.C, Smiling Times campaigned by the Die Family and Sheza Barbie campaigned by Zach Mills – all making their mark in the breed as donors. We have cattle from the sixth generation of this cow family and they still produce with the same efficiency and high performance traits as the family matriarch, She Moves. Cattlemen, internationally are aware of the mark this family has made in the breed, also!



*nancy*

LMC SHE MOVES 3L/136





SMITH CHARMING MOVES 132Y-SHE MOVES DAUGHTER



SMITH 7N SHEZA BARBIE 88E-SHE MOVES GRANDDAUGHTER



SMITH TMP SMILING MOVES 32A-SHE MOVES GRANDDAUGHTER



SMITH 7N BARBIE MIDNIGHT STORM 563H-SHE MOVES GRANDDAUGHTER.  
BARBIE DAUGHTER

# The Power of the Cow



LOT 19

19

## SMITH NO BETTER MOVES 602K

Owner: **Smith Genetics/Taylor**  
 ASA#: 4233825 Polled PB Simbrah Cow  
 Tattoo: 602K BD: 6/1/2022

Indexes:	API 94.5	TI 61.9
Percentile Ranking:	25%	20%

WLE TWANG Z547 MCCRARY SMITH INSPIRED  
**SIRE: SMITH NO BETTER THAN THIS** **DAM: SMITH REALLY MOVES 602G**  
 SMITH TULIPE WAVE 62W SMITH WLTRS SMOOTH MOVES

One of the PRESALE FAVORITES! Yes, she is good but even better in person! She is awesome made from the side, with that winning feminine look and lots of muscle and dimension to go with it. That She Moves family show ring appeal is backed by true performance numbers ranking her in the top 25% of the breed for API and top 20% for TI. Added value is in this package and take advantage of our adult and junior benefits on these heifers. Don't miss out on females like this – front pasture kind! **AI'd to Smith Follow My Lead ASA #3997767 on 8/19/23.**



LOT 20

20

## SMITH 7N BARBIE SHOWTIMES 58K

Owner: **Smith Genetics/7N Ranch**  
 ASA#: 4233811 Polled PB Simbrah Cow  
 Tattoo: 58K BD: 7/2/2022

Indexes:	API 98.9	TI 64.5
Percentile Ranking:	20%	10%

CNS DREAM ON L186 LMC JOHNNIE WALKER SR179  
**SIRE: SMITH MADE SOLID** **DAM: LMC BETM BARBIE 5Y/8**  
 SMITH INSPIRED ANNIE LM SHE MOVES 3L/136

The Made Solid daughters have definitely made their mark with National and International champion daughters such as Smith Sandifer Lovely Lady May (campaign by Thorp family) and Smith McCrary Roxie (campaign by Hackett family) – both now in donor programs! This summer born heifer qualifies for all our junior benefits. 58K is a full sister to the donor owned with the Glueck family, Smith 7N Barbie Midnight Storm pictured in the spread. Besides show ring appeal take a close look at her EPDs, top 20% for API and 10% for TI. She has the complete package: eye appeal, performance EPDs, top cow family notoriety, cutting edge sire notoriety, and above all SHE IS FLAT GOOD! **AI'd to Smith Follow My Lead ASA #3997767 on 8/18/23.**



LOT 21

21

## SMITH MYSTERIOUS MOVES 029L

Owner: **Smith Genetics**  
 ASA#: 4233812 Polled PB Simbrah Cow  
 Tattoo: 029L BD: 4/19/2023

Indexes:	API 105.0	TI 69.9
Percentile Ranking:	10%	4%

CNS DREAM ON L186 SMITH EVAN  
**SIRE: SMITH MADE SOLID** **DAM: SMITH TARA MOVES**  
 SMITH INSPIRED ANNIE LM SHE MOVES 3L/136

When you truly study Mysterious Moves, she is one of the most fault free in the offering. She came in late on the recipient through this drought and is just now starting to show her true colors. Super complete and stylish, long flat necked and she ties all the right parts together. I could describe her as super elegant and don't forget she qualifies for all junior benefits! She is a lady you are bound to love. **Open.**



Buyer's choice of these two twin sisters from the award winning Smith 7N Sheza Barbie 88E donor cow. Sheza Barbie, as you can see in her picture when she showed as a pair, exhibits one of the most ideal udder structures I have seen on a cow with perfect attachment and perfect teat size – both traits we need to pay attention to as progressive breeders because they equate to longevity in your herd. In addition to the bred in maternal power on these two heifers selling, check out their top 10% API and top 4% TI rankings in the breed. These are the type of females that last a long time in your herd and you would travel many a mile to find ones as good as these two offered here today – buy with confidence! **Open.**



SMITH 7N SHEZA BARBIE 88E-DAM OF LOTS 22 AND 23



LOT 22



LOT 23

## 22 SMITH TWIN BARBIE 63K

Owner: **Smith Genetics**  
 ASA#: 4233981 Polled PB Simbrah Cow  
 Tattoo: 63K BD: 9/2/2022

Indexes:	API	TI
Percentile Ranking:	108.4	69.1
	10%	4%

WHF DEVILS CUT A245  
 SIRE: SMITH PRACTICAL 42D  
 SMITH RED IRENE 133A

SMITH RHETT  
 DAM: SMITH 7N SHEZA BARBIE  
 LMC BETM BARBIE 5Y/8

## 23 SMITH TWIN BARBIE 88K

Owner: **Smith Genetics**  
 ASA#: 4233980 Polled PB Simbrah Cow  
 Tattoo: 88K BD: 9/2/2022

Indexes:	API	TI
Percentile Ranking:	108.4	69.1
	10%	4%

WHF DEVILS CUT A245  
 SIRE: SMITH PRACTICAL 42D  
 SMITH RED IRENE 133A

SMITH RHETT  
 DAM: SMITH 7N SHEZA BARBIE  
 LMC BETM BARBIE 5Y/8



A large black and white photograph of a cow standing in a field. The cow is dark-colored with a white blaze on its face and a white patch on its belly. It is standing in a grassy field with trees in the background.

SMITH DIVA'S DANCING QUEEN-  
DIVA DAUGHTER

*nancy*



*nancy*

LMC DIVA

**CURTAIN CALL PLEASE** – the DIVA's have been on stage and behind the picture for many a year with this proven cow family including some of the most noted breed greats, LMC WFC Dream Girl, Smith Just A Diva (dam of Smith Just Because 220D), Smith Diva's Dancing Queen (dam of junior herd sires Smith Something in Red and Smith No Compromise), Smith Diva's Sound of Silence and Smith Gotcha Diva to name a few. These outstanding females are joined by breed leading sires like Smith Have No Fear, Smith One and Only and Smith Just Because. These genetics are found incorporated on both the maternal and paternal sides of Smith Genetics pedigrees because we know the genetic power they possess!



LMC WFC DREAM GIRL-DIVA DAUGHTER



# The Power of the *Cow*



SMITH DIVA'S SOUND OF SILENCE 531G-DIVA DAUGHTER



SMITH RITA'S EASY CHOICE 263H-DIVA GRANDDAUGHTER



SMITH SWFS JUST A DIVA-DIVA DAUGHTER

# Oprah-Diva-Just A Diva- Dancing Queen *Cow Family*



SMITH DIVA'S DANCING QUEEN-DAM OF LOT 24 EMBRYOS



SOMETHING ABOUT MARY-SIRE OF LOT 24 EMBRYOS



SMITH SOMETHING IN RED "SIR"-FULL BROTHER TO LOT 24 EMBRYOS

## 24 TWO SEXED FEMALE IVF EMBRYOS

Owner: Smith Genetics

Polled PB Simbrah Embryos

Indexes:	API	TI
Percentile Ranking:	113.2	72.3
	2%	2%

W/C RELENTLESS 32C  
SIRE: JSUL SOMETHING ABOUT MARY 8421  
JBSF PROUD MARY

SMITH MADE SOLID  
DAM: SMITH DIVA'S DANCING QUEEN  
LMC MISS DIVA

**Selling two sexed IVF female embryos with a minimum guarantee of 1 pregnancy (no maximum) if implanted by a certified technician. The guarantee becomes void after two years from sale date.**

When I made this planned mating, I was so pleased to be able to incorporate Something About Mary into the Simbrah pedigrees. The impact this bull has on many Simmental programs across the country is huge and now just look at his son that is a full sib to these sexed heifer embryos, Smith Something in Red "SIR". Dancing Queen has never disappointed no matter which sire we have mated her with--indicative of her genetic potency! Look at SIR and the guess work has been removed on the impact of this mating! If you want to be a breed leader with cutting edge genetics that excites the industry, then buy this set of embryos -- they MEET THE MARK!





LOT 25

**25**

## SMITH DIVA`WHISPER 202L

Owner: **Smith Genetics**  
 ASA#: 4233807 Polled PB Simbrah Cow  
 Tattoo: 202L BD: 1/9/2023

Indexes:	API	TI
Percentile Ranking:	112.8	69.8
	2%	4%

CNS DREAM ON L186  
 SIRE: **SMITH MADE SOLID**  
 SMITH INSPIRED ANNIE

SMITH SATISFIES  
 DAM: **SMITH SWFS JUST A DIVA**  
 LMC MISS DIVA

**Selling ½ interest and ½ possession – there is NO OPTION to double the bid and own all of her!**

**YEP YEP YEP – SHE’S THAT GOOD!** Please note we did not offer to double the bid and own 100% because I don’t have this same set of genetics in my donor program at this time and I believe she is a true **GREAT ONE!** Oh yes, she can show and win and will do wonderful and I encourage you to bid right up juniors but her true value and monetary success will be seen as a donor – I repeat I think she is a **GREAT ONE!** You can’t miss her brood cow look and massive volume and substance but don’t overlook that top 2% API ranking and top 4% TI ranking in the breed. **SHE HAS IT ALL - YOU’LL REGRET NOT OWNING THIS ONE! Open.**

## SILENT AUCTION SCHEDULED

A silent auction will be held on Saturday at Synergy, starting at noon till sale time. Proceeds will benefit Siimbrah promotional efforts.

Twila and Belva Johnson will once again be coordinating the event. Please bring an item to the auction.



LOT 26



OBCC CMFM DEPLORABULL-SIRE OF LOT 26



SMITH WLTRS CROCKETT-SIRE OF LOT 27



SMITH SWFS JUST A DIVA-DAM OF LOTS 25, 26, 27

26

## SMITH DIVA'S GOOD HABITS 022L

Owner: **Smith Genetics**  
 ASA#: 4233817 Polled 3/4 SM 1/4 BR Cow  
 Tattoo: 022L BD: 1/25/2023

Indexes:	API	TI
Percentile Ranking:	106.5	68.1
	10%	5%

W/C EXECUTIVE ORDER 8543B  
 SIRE: OBCC CMFM DEPLORABULL D148  
 LAZYH/ADKINS BLKSTAR Z15  
 SMITH SATISFIES  
 DAM: SMITH SWFS JUST A DIVA  
 LMC MISS DIVA

Selling 1/2 interest and 1/2 possession with option to double the bid and own 100%.

We love the power of our 3/4 SM x 1/4 BR females in the breeding program because they flat work and give us that extra mass and performance in pounds of calf weaned we desire – remember if they weigh more they pay more in the commercial world and we can't lose sight of the commercial cattleman! This unique mating has lots of bred in performance and again the data and numbers to back it up and take out the guesswork – ranks in top 10% for API and top 5% for TI – WOW! If you're looking to add a percentage female that is bred in the purple with a genetic profile including some of the greatest Simmental genetics in the breed, then GOOD HABITS answers all your needs! **Open.**

27

## TWO SEXED FEMALE IVF EMBRYOS

Owner: **Smith Genetics**  
 Polled PB Simbrah Embryos

Indexes:	API	TI
Percentile Ranking:	90.9	63.1
	35%	15%

SMITH NU APPROACH  
 SIRE: SMITH WLTRS CROCKETT  
 SMITH RFI PAIGE  
 SMITH SATISFIES  
 DAM: SMITH SWFS JUST A DIVA  
 LMC MISS DIVA

Selling two sexed IVF female embryos with a minimum guarantee of 1 pregnancy (no maximum) if implanted at Smith Genetics. The guarantee becomes void after two years from sale date.

This mating is very exciting when you combine the DIVA and Tulipe-Bella cow families in the pedigree. Yes, the dam of Bella Bella, Smith Tulipe 765L, is the granddam to Crockett as well. The genetic makeup of this mating has unlimited potential, and these will be the first calves from this combination. There is no dilution gene in the pedigree so no matter red or black they will be non-diluters! We lost the Just A Diva cow this year to kidney failure and it is tough to part with embryos of this value but we are committed to sharing our best, so here is your opportunity!



The true test on any sire is the consistent production he yields on a diverse set of genetics, and none are more evident as to potency and predictability of Smith Practical than you see in his set of daughters offered throughout the sale. They simply are good and make great cows! Now combine him with the Diva's and you can get 633K stemming from the donor Rita! Performance is no issue as well – ranking in top 10% API and 5% TI. Females of this caliber are in big demand with today's cattle prices and the bred in genetic power in this mating makes 633K an easy addition to any herd. Yes, she qualifies for all our benefits on semen and the junior program! **Open.**



LMC WFC RITA 5U/63-DAM OF LOT 28



LOT 28

28

## SMITH DIVA'S RITA RITA 633K

Owner: **Smith Genetics**  
 ASA#: 4234123 Horned PB Simbrah Cow  
 Tattoo: 633K BD: 9/2/2022

Indexes:	API	TI
Percentile Ranking:	103.9	67.4
	10%	5%

WHF DEVILS CUT A245  
 SIRE: SMITH PRACTICAL 42D  
 SMITH RED IRENE 133A

SMITH SATISFIES  
 DAM: SMITH SWFS RITA 63B  
 LMC WFC RITA 5U/63

29

## SMITH PAUL W 150L

Owner: **Smith Genetics**  
 ASA#: 4233809 Polled PB Simbrah Bull  
 Tattoo: 150L BD: 4/9/2023

Indexes:	API	TI
Percentile Ranking:	93.6	67.9
	30%	5%

WLE BIG IRON E205  
 SIRE: SMITH FOLLOW MY LEAD  
 SMITH LUCKY LILLY 94D

SMITH SATISFIES  
 DAM: SMITH SWFS DRAMATIC DIVA  
 LMC MISS DIVA



LOT 29

**Selling 1/4 interest and 1/4 possession.**

Just a baby, but he has that "I know I'm good look"! If you like them stout the whole way through, while still maintaining balance and eye appeal, you will love this prospect! Huge hipped, sure footed, thick thick from behind, with as much look and style as you can ask for. Now study that pedigree with his dam being a Satisfies daughter out of Diva, making her a full sister to Smith Just A Diva (dam to Smith Just Because) and his sire being a son of the Barry Wesner (WLE) bull, Big Iron, who was noted for his ability to pass on excellent foot size and leg soundness. Yes, he has the performance to back it all with a balanced set of numbers incorporating into a ranking of 30% API and 5% TI in the entire Simbrah breed! Paul W has the look, performance, soundness, thickness, and bred in notoriety and predictability to make a great leading herd sire. Join us and INVEST IN THIS GUY – he won't disappoint!



SMITH NU TIFFANY-PURE DIAMOND DAUGHTER. DAM OF LOT 30 EMBRYOS



SMITH PURE DIAMOND

# Pure Diamond- Hidden Jewel- Tiffany- Full Karat *Cow Family*

This cow family is known for producing very efficient, easy keeping kind of cattle that are heavy boned with ideal foot size, yet track like a tom cat. Family members such as Smith RFI Hidden Jewel made their mark in the show ring with Kaleb Fontenot on the halter and the Smith Pure Diamond cow was a many times champion for the Meadows family. If you ask Haley, she will tell you stories about her champion, Smith Calamity Jane that originated the family – all donors that have and are continuing to make a mark in the breed. “THE KIND YOUR PROUD TO OWN!”



# The Power of the Cow



SMITH FULL KARAT-PURE  
DIAMOND DAUGHTER



LOT 31



SMITH LUKE BENJAMIN-SIRE OF LOT 31



SMITH RFR HIDDEN JEWEL-PURE DIAMOND GRANDDAUGHTER

30

## TWO SEXED FEMALE IVF EMBRYOS

Owner: Smith Genetics

Polled PB Simbrah Embryos

Indexes:	API 99.3	TI 67.2
Percentile Ranking:	15%	10%

CNS DREAM ON L186

SIRE: SMITH MADE SOLID  
SMITH INSPIRED ANNIE

SMITH NU APPROACH

DAM: SMITH NU TIFFANY APPROACH  
SMITH PURE DIAMOND

**Selling two sexed IVF female embryos with a minimum guarantee of 1 pregnancy (no maximum) if implanted by a certified technician. The guarantee becomes void after two years from sale date.**

Back by popular demand as we sold this mating in last year's sale and averaged \$10,000 per embryo and more breeders asked for them so we put Nu Tiffany Diamond back in the IVF program and made more per your request – yes they are sexed female embryos. This cow family keeps gaining credibility, they are productive and as you can see, they have all the good looks and class that they need to be the front pasture kind anywhere they go. The dam of these embryos, Nu Tiffany, is a bigger framed, longer spined, high performing purebred and balances her total mass and body with near perfect angles and structural design. The sire of the embryos, Smith Made Solid, produced the 2022 National Champion Female, Smith McCrary Roxie shown by Hallie Hackett and the International Champion Female, Smith Sandifer Lady May campaigned by Leah Thorp. He can do it again with this mating to Tiffany! Buy these and enjoy the pictures in the winner's circle and the trips to the bank because this mating will prove to be money well spent!

31

## SMITH RFI SHEZA JEWEL 151K

Owner: Smith Genetics/Reavis Farms

ASA#: 4233857

Tattoo: 151K

Polled PB Simbrah Cow

BD: 5/18/2022

Indexes:	API 98.8	TI 59.9
Percentile Ranking:	20%	30%

SMITH JUST BECAUSE

SIRE: SMITH LUKE BENJAMIN 370G  
SMITH SWFS DETONATION

SMITH STOUT N BLACK

DAM: SMITH RFI BLACK JEWEL  
SMITH PURE JEWEL

Check out the cows in this pedigree: Smith Just A Diva, Smith Ciao Bella, Smith Priceless, Madam X, Smith Pure Diamond – if you have studied Simbrah they will ring bells! Check out the bulls in this pedigree: Smith Stout N Black, Smith Satisfies, CNS Dream On, Smith Detonator, NF Smith Sargeant, - yes they are all in this heifer's genetic makeup! This female has as many breed greats involved in her bloodlines as any in the sale --- she is worthy of your evaluation! She qualifies for all the benefits and semen is available from all Reavis Farms and Smith Genetics bulls for future use on this young female. Study her and don't let replacement females like this slide through your fingers when the industry tells us cattle numbers are low! **AI'd to Smith Easy Like 21J ASA #3923636 on 8/15/23.**



LOT 32



SMITH SWFS HB BRIGHTSTAR 115C-DAM OF LOT 32



SMITH HAVE NO FEAR-SIRE OF LOT 32

32

## SMITH J&L FEARLESS STAR 511K

Owner: **Smith Genetics/J&L**  
 ASA#: 4233852 Polled PB Simbrah Cow  
 Tattoo: 511K BD: 2/6/2022

Indexes:	API	TI
Percentile Ranking:	79.9	53.7
	75%	70%

SVF STEEL FORCE S701  
 SIRE: **SMITH HAVE NO FEAR 909B**  
 LMC MISS DIVA

SMITH SATISFIES  
 DAM: **SMITH SWFS HB BRIGHTSTAR**  
 SMITH STACY

Class, elegance and style are three things that instantly come to the forefront of your mind when you come into contact with this fancy heifer. She is out of the Brightstar donor owned with Joe and Lanna Hensgens that we continue to aspirate and the Smith Have No Fear bull that we own with the Tortorice Family that continues to produce breed greats like the dam of the 2023 International Champion, Smith Charming and Lively owned with the Sansom Family. This heifer has a great future just like her ancestry. Study her, she has all the pieces and is backed by tremendous maternal strength. Semen from any bulls in the Hensgens or Smith Genetics programs will be available when fulfilling your semen benefits on this female. We think SHE IS SPECIAL and qualifies for all junior benefits as well! **Open.**





LOT 33

33

## SMITH DMM GENUINE CLASSIC 291K

Owner: **Smith Genetics/Double M**  
 ASA#: 4233854 Polled 3/4 SM 1/4 BR Cow  
 Tattoo: 291K BD: 12/18/2022

Indexes:	API	TI
Percentile Ranking:	114.3	69.3
	2%	4%

LLSF PAYS TO BELIEVE ZU194  
 SIRE: **WLE GENUINE E020**  
 SHAWNEE MISS 770P

SMITH JUST BECAUSE  
 DAM: **SMITH REAL CLASSIC 912G**  
 SMITH CRC NU PERFECTION

She is among the presale favorites and if you came to add fresh genetics to your program then don't overlook this  $\frac{3}{4}$  female! She can show but her true value will be seen when she hits your donor pen – she is that good! Qualifies for all junior benefits and can show Sunday! Her dam 912G was AJSA National Classic Grand Champion and her sire Genuine is out of the immortal 770P top ranking Simmental Cow produced by Barry Wesner. I can tell you how balanced and feminine she is and how deep bodied she is and how nice of a leg structure and foot size she has but what you really need to be thinking about is how productive she can be to add all those positive traits to your next set of calves. She deserves a STAR next to her name in your catalog! **Open.**



SMITH REAL CLASSIC 912G-DAM OF LOT 33



SMITH REAL CLASSIC 912G AS THE 2020 AJSA NATIONAL CLASSIC GRAND CHAMPION





SF/RICA SUAVE

*nancy*

# Rica Suave *Cow Family*



*nancy*



SMITH NU IMPRESSION 298B-SUAVE DAUGHTER

SMITH NEW IDEA 298F-SUAVE DAUGHTER. FULL SISTER TO LOT 34 EMBRYOS



34

## TWO SEXED FEMALE IVF EMBRYOS

Owner: **Smith Genetics**

Polled PB Simbrah Embryos

Indexes:	API	TI
Percentile Ranking:	93.1	52.0
	30%	80%

CNS DREAM ON L186

SIRE: **SMITH STOUT N BLACK**  
TRIPLE C SHES AMAZING

LMC POLLED RICO 228/9

DAM: **SF/RICA SUAVE**  
PRR FASHION PRO 298XThe Power  
of the Cow

Selling two embryos with a minimum guarantee of 1 pregnancy (no maximum) if implanted by a certified technician. The guarantee becomes void after two years from sale date.

Suave grabs the attention of visitors at the ranch when they come up on her in the pasture. She is the epitome of MAJESTIC and LADYLIKE! Suave is my choice of the 1/4 X 3/4 and 3/8 x 5/8 females in the breed and we have utilized her to produce those first generation Simbrah cattle with outcross pedigrees. She is impressive in the flesh and her calves make you proud! The full sister to these embryos is pictured here, Smith New Idea 298F, owned by the Butler Family, and she doesn't disappoint! Fresh genetics offered in this mating and the potential for outcrossing back with the bulls in our breed is exciting! Proven genetic makeup from a proven donor cow!



LOT 36



LOT 35

Selling  
CHOICE

35

## SMITH LOTSA SUAVE 298K

Owner: **Smith Genetics**

ASA#: 4233819

Polled PB Simbrah Cow

Tattoo: 298K

BD: 5/2/2022

Indexes:	API	TI
Percentile Ranking:	70.9	47.6
	99%	95%

CNS DREAM ON L186

SIRE: **SVF STEEL FORCE S701**  
SVF SHEZA BEAUTY L901

LMC POLLED RICO 228/9

DAM: **SF/RICA SUAVE**  
PRR FASHION PRO 298X

## SELLING CHOICE OF TWO EMBRYO SISTERS.

TOUGH DECISION FOR THE BUYER! Offering buyers choice of two full embryo transplant sisters sired by the legendary SVF Steel Force, owned by Griswold Cattle Co, that has produced numerous greats in the Simmental breed and his daughters are considered some of the best of all times. Suave is the dam to these outstanding replacement females and she has left her maternal mark with the angularity and femininity they possess. Suave is a picture perfect uddered cow when she calves even at 11 years of age. Be sure and take advantage of the semen policy we offer on the females in the sale – the exciting matings that can be made on these outcross females is unreal! True Brahman influenced females that will make their way to the donor pen! **Both AI'd to Smith Isgrig Something In Red ASA #4084790 on 8/18/23.**

36

## SMITH KINDA SUAVE 892K

Owner: **Smith Genetics**

ASA#: 4233820

Polled PB Simbrah Cow

Tattoo: 892K

BD: 5/3/2022

Indexes:	API	TI
Percentile Ranking:	70.9	47.6
	99%	95%

CNS DREAM ON L186

SIRE: **SVF STEEL FORCE S701**  
SVF SHEZA BEAUTY L901

LMC POLLED RICO 228/9

DAM: **SF/RICA SUAVE**  
PRR FASHION PRO 298X



RFI REAL DEAL-LOT 37 SIRE



RFI DONE DEAL-FULL BROTHER TO LOT 37

37

## RFI MISS CANDICE

Owner: **Smith Genetics**  
 ASA#: 3003252 Polled 3/4 SM 1/4 BR Cow  
 Tattoo: 30C BD: 4/4/2015

	API	TI
Indexes:	91.8	68.6
Percentile Ranking:	30%	5%

SMITH EVAN  
 SIRE: RFI REAL DEAL  
 RFI DOMINOE  
 ANKONIAN RED CAESAR  
 DAM: MS ANNIE RH/WF W30  
 MISS 42B HR R30

Really nice pair of cattle in this offering and not only lay your eyes on them but also study the numbers they both post – very balanced and these type of  $\frac{3}{4}$  cattle simply work! Candice is a full sister to the Smith & Reavis AI Sire, RFI Done Deal, that posts some high indexing calves with lots of performance and some of our highest weaning weight ratios. The maternal power of the RFI Real Deal daughters is definitely noticed in our breeding program! Study this pair and evaluate the cow power but also think about the potential of this black herd sire prospect at side. Pasture exposed to Smith Isgrig Something in Red “SIR” ASA #4084790 8/11/23 to 9/23/23. Palpation information available sale day. Lot 37A: Smith Better Times 30L ASA #4233974. Polled  $\frac{3}{4}$  SM x  $\frac{1}{4}$  BR bull. Sired by Smith No Better Than This.

38

## SMITH CROCKETT'S GLORY 433K

Owner: **Smith Genetics**  
 ASA#: 4233967 Horned PB Simbrah Cow  
 Tattoo: 433K BD: 10/3/2022

	API	TI
Indexes:	65.3	57.7
Percentile Ranking:	99%	40%

SMITH NU APPROACH  
 SIRE: SMITH WLTRS CROCKETT  
 SMITH RFI PAIGE  
 SMITH ISGRIG CHARISMATIC  
 DAM: SMITH JCC GLORY BE 433Z  
 SMITH BURCH GLORIOUS

An own daughter of Crockett and tracing back to the Golden Glory Cow Family. Do not hesitate on buying these Crockett daughters. Study them. They are the real deal with lots of angularity, stout featured and classy looks. She is just a fall born and qualifies for all our benefits – she will be ready to breed this fall and might we suggest our youngest addition to the bull lineup, Smith Isgrig Something in Red “SIR”! Open.



SMITH RFI GOLDEN GLORY-LOT 38 IS A DESCENDANT OF THIS COW FAMILY



LOT 38





SMITH 7N SAVAGE-SIRE OF LOT 39 AND 48



LOT 39



SMITH BURCH MODERN GIRL 431Y-DAM OF LOT 39

39

## SMITH MODERN WAYS 431K

Owner: **Smith Genetics**

ASA#: 4233977

Tattoo: 431K

Polled PB Simbrah Cow

BD: 5/3/2022

Indexes:	API	TI
Percentile Ranking:	81.1	64.7
	70%	10%

KAPPES PENDLETON B6

SMITH NU WAVE II

SIRE: SMITH 7N SAVAGE

DAM: SMITH BURCH MODERN GIRL

SMITH WENTZ O EVE Y80

SMITH RFI GOLDEN GLORY

Another member of the Golden Glory Cow Family and she carries that same dimension and maternal look that made the family so popular. This heifer is a maternal sister to the Smith Modern Milly cow that was shown by Braeden Stork and was the start of their successful Simbrah herd. This mating combines Golden Glory and the Oprah-Diva cow families. Savage is a great sire that adds the breed character, leg structure and foot size that is sought after by breeders. Modern Ways post a TI in the top 10% and stems from one of the heaviest milking cow families we treasure. She has body, mass, width, dimension and eye appeal from her head to her tail. **Open.**

40

## SMITH SWING AND SWAY 750J

Owner: **Smith Genetics**

ASA#: 3923325

Tattoo: 750J

Polled PB Simbrah Cow

BD: 3/3/2021

Indexes:	API	TI
Percentile Ranking:	86.0	61.2
	55%	25%

WHF DEVILS CUT A245

SMITH SPECIALIST

SIRE: SMITH INTRIGUE 312D

DAM: SMITH SPECIAL ROSE 43D

SMITH MI BELLA CARA

SMITH MISS 43U

Just a two-year-old that raised a hell of a steer calf this year that sold for a junior project. This cow was successfully campaigned by Addison Lucas and is puppy dog gentle. She has donor potential and is sired by the Intrigue bull, who has been breeding cows in Oklahoma for the John David Burch family. Intrigue breeds lots of milking ability and fertility into his daughters and that is no surprise since he is out of the Smith Mi Bella Cara donor here at Smith Genetics. The buyer will receive an additional two straws of semen from our herd bull battery for future use on this great donor prospect. **Pasture exposed to Smith Isgrig Something In Red ASA #4084790 from 8/19/23 to sale day.**



LOT 40



DRFF ESTABLISHED 612C-LOT 41 SIRE



LOT 41

41

## SMITH GOTTA HAVE FAITH 639K

Owner: **Smith Genetics**  
 ASA#: 4233979 Polled PB Simbrah Cow  
 Tattoo: 639K BD: 4/29/2022

	API	TI
Indexes:	74.1	56.4
Percentile Ranking:	95%	50%

SMITH STOUT N BLACK  
**SIRE: SMITH DRFF ESTABLISHED**  
 HAGAN RUBY RED 12W

SMITH ISGRIG CHARISMATIC  
**DAM: SMITH MCCRARY FAITH**  
 SMITH MCCRARY HEAVENLY

If you like a long sided, flat hip with plenty of body and rib shape, feminine look, this just may be your girl. Established daughters are easy keeping fertile females- note his sire is Smith Stout N Black – so no surprise on the maternal power of this pedigree. Take advantage of the semen offering on this young replacement, lots of possibilities. She is the right kind with lots of cow power in the pedigree! **Bred to Smith Isgrig Something In Red “SIR” ASA #4084790 on 8/7/23. Palpation information available sale day.**

42

## SMITH LIKE NEVER GIRL 759K

Owner: **Smith Genetics**  
 ASA#: 4233968 Polled PB Simbrah Cow  
 Tattoo: 759K BD: 7/2/2022

	API	TI
Indexes:	99.4	62.1
Percentile Ranking:	15%	20%

SMITH PRACTICAL 42D  
**SIRE: SMITH LIKE NEVER BEFORE 328G**  
 SMITH ISGRIG BELLA NOTTE

SMITH DETONATOR 321A  
**DAM: SMITH RFI ALL GIRL 759E**  
 SMITH RFI PURE WOMAN

One of our first offerings from the up-and-coming junior herd sire, Smith Like Never Before 328G, who is out of the National Champion, Smith Isgrig Bella Notte. This young sire is being used by 5MM Cliff Marshall family, Reavis Farms, 3JK King Family, 7N Ranch, McCrary Farms and Hutto/Reeves programs – he has an influence! She has a touch of the Bella Bella family on both sides of her pedigree – this is no mistake. This female is so angular up front and possesses that wedge shaped body structure noted in top brood cows. She is the right kind. **AI'd to Smith Isgrig Something In Red ASA #4084790 on 8/18/23.**



SMITH LIKE NEVER BEFORE 828G-SIRE OF LOT 42 AND 43



LOT 42





LOT 43

43

## SMITH RFI NEVER DEVILISH 631K

Owner: **Smith Genetics/Reavis Farms**  
 ASA#: 4233978 Polled 3/4 SM 1/4 BR Cow  
 Tattoo: 631K BD: 7/10/2022

	API	TI
Indexes:	98.6	64.6
Percentile Ranking:	20%	10%

SMITH PRACTICAL 42D WHF DEVILS CUT A245  
 SIRE: **SMITH LIKE NEVER BEFORE 328G** DAM: **SMITH RFI DEVILISH 631D**  
 SMITH ISGRIG BELLA NOTTE SMITH RFI TULIPES 267Z

Great replacement female here that is also sired by Smith Like Never Before and she stems on the maternal side from another Tulipe- Bella family member. Now glance at her top 20% API and 10% TI ranking and you see she combines pedigree and performance to complete the genetic package. Great cow power potential and remember to take advantage of the Smith and Reavis Farms semen offering that goes with this heifer. **Pasture exposed to Smith Isgrig Something In Red ASA #4084790 from 8/19/23 to sale day.**

44

## SMITH JESSIE N ALEX 144K

Owner: **Smith Genetics**  
 ASA#: 4233971 Polled PB Simbrah Cow  
 Tattoo: 144K BD: 7/3/2022

	API	TI
Indexes:	76.0	60.2
Percentile Ranking:	90%	30%

SMITH NF SIMPLY GREAT SMITH JESSIE  
 SIRE: **SMITH SATISFIES** DAM: **SMITH ALEXANDRIA**  
 SMITH GREY MIST SMITH LILLY LEGEND

Satisfies is a bull that we continue to pull out of the tank every year at breeding season because we have seen the value of his progeny in our program and others. 144K stands as a testament to the kind of cattle he produces. It is a pretty easy decision to keep using the king – I remember one year at Round Up eight of the ten animals in the championship drive were sired by Satisfies. This year's National Champion Heifer and Superbowl Champion, BLCO LMC Fresca, bred by the Hill Family and campaigned by Pops Guerra/La Muñeca is out of the Satisfies daughter, RFI Scarlett that Lorelai Hill showed to many championships. Satisfies influence is multi-generational. Here is a chance to buy a young Satisfies daughter with a bright future ahead, remember our semen benefits and the fact she ranks in the top 30% for TI - **SOUND INVESTMENT! Open.**



SMITH ALEXANDRIA 144F-DAM OF LOT 44



LOT 44

43

**PRESALE FAVORITE!** With the power of Practical to back her up, a pretty face as soon as you see her and the ultra-feminine cowy type that we all know works in the show ring and pasture, this is one you are sure to find. She has a unique pedigree on the bottom side that is full of maternal traits. She is in that smaller summer class and I believe will prove to be very competitive – juniors check her out and our junior benefits – she qualifies! She has all the parts needed to make a great donor following her successful show career! **AI'd to Smith Follow My Lead ASA #3997767 on 8/18/23.**



LOT 45

## 45 SMITH SHY BUT PRACTICAL 19K

Owner: **Smith Genetics**  
 ASA#: 4233972      Horned PB Simbrah Cow  
 Tattoo: 19K      BD: 7/4/2022

Indexes:	API	TI
Percentile Ranking:	87.2	53.7
	50%	70%

WHF DEVILS CUT A245      HR POWER HOUSE 1  
**SIRE: SMITH PRACTICAL 42D**      **DAM: SMITH SHY BUT POWERFUL**  
 SMITH RED IRENE 133A      SMITH SHY

## 46 SMITH INSPIRING ROSE 21K

Owner: **Smith Genetics**  
 ASA#: 4233973      Polled PB Simbrah Cow  
 Tattoo: 21K      BD: 7/6/2022

Indexes:	API	TI
Percentile Ranking:	94.1	58.2
	25%	35%

WLE TWANG Z547      MCCRARY SMITH INSPIRED  
**SIRE: SMITH NO BETTER THAN THIS**      **DAM: SMITH MCCRARY ROSE 21C**  
 SMITH TULIPE WAVE 62W      RFI SMITH A BIT ANXIOUS



LOT 46

This daughter of Smith No Better Than This will grab your attention and then you realize how well she reads on paper, as she is in the top 25% for API and 35% for TI – that seals the deal. She is a beautiful, wedgy made, big-hipped heifer that has all the class and style that you can pack in a female. **AI'd to Smith Follow My Lead ASA #3997767 on 8/18/23.**



This fall born heifer is ultra feminine and stems from the great Simmental foundation donor Schnazzie, that the “use to be Smith juniors” that are now “old timers” will remember – Wayne, Terry, Jordan, Haley, Richard, Sam ... to name a few and notice no last names – I hope I’m safe! All jokes aside, this female excels in future maternal power and backs that up with Luke Benjamin on the sire side stemming from the Priceless family. If you need a future brood cow with donor qualities, longevity and fertility bred in, then look no further. She is 39K.



LOT 47

## 47 SMITH LUKE`S SNAZZY 39K

Owner: **Smith Genetics**  
 ASA#: 4233976 Polled PB Simbrah Cow  
 Tattoo: 39K BD: 9/3/2022

Indexes:	API	TI
Percentile Ranking:	98.0	62.6
	20%	20%

SMITH JUST BECAUSE  
 SIRE: SMITH LUKE BENJAMIN 370G  
 SMITH SWFS DETONATION

SMITH CRC LUBBOCK 36B  
 DAM: SMITH DRFF LUVIN SCHNAZZ 39G  
 SMITH MADE TO LUV N RED

## 48 SMITH SAVAGE MOVES 92L

Owner: **Smith Genetics**  
 ASA#: 4233969 Polled PB Simbrah Cow  
 Tattoo: 92L BD: 1/16/2023

Indexes:	API	TI
Percentile Ranking:	86.3	62.6
	50%	20%

KAPPES PENDLETON B6  
 SIRE: SMITH 7N SAVAGE  
 SMITH WENTZ O EVE Y80

SMITH 7N SAVAGE  
 DAM: 7N SMITH HYSTERIA 29H  
 7N YES WE DID 257C



LOT 48

PUT SOME BIG CHECKMARKS BY THIS LOT! Juniors if you want to be competitive in the calf division and still have unique cow power when she is retired then you really better study 92L. She has power, muscle and additional depth through the center portion of her body, yet she maintains tremendous structural angles and flexibility. Yes, she has a unique genetic profile being a linebred Savage daughter but we are pleased with the results and her numbers. Qualifies for all the junior benefits and can show on Sunday – great disposition to boot! **Open.**



*nancy*

SVF GOLD DUST R770

# 770P-R770

## Cow Family

These two donors, 770P and R770, are full sisters and I believe carry some of the strongest maternal traits and ability to produce both herd sires and donors in the breed – for that reason Smith Genetics has been breeding and or collecting multiple daughters and members of this cow family to not only use in Simmental but to also build a foundation of Simbrah cattle from the same family. Breed leading sires produced from this family include: WLE Uno Mas, WLE Twang, WLE Revolution, Smith Dream Carson, Smith Dusty N Black to name a few and we have over 15 of their daughters and granddaughters in our donor line up. We are using them for new Simbrah lines, SimAngus lines and Purebred Simmental. Their maternal power will always make their owners a profit if they know how to manage and market! The true successful breeders in this industry build off of proven cow families!



SHAWNEE MISS 770P





LOT 49



WLE COPACETIC E03-SIRE OF LOT 49

## The Power of the Cow

49

### SMITH R770 LISA DAWN N BLACK

Owner: **Smith Genetics**

ASA#: 4233853

Polled 3/4 SM 1/4 AN Cow

Tattoo: 770K

BD: 12/20/2022

Indexes:	API	TI
Percentile Ranking:	103.8	70.2
	95%	85%

HPF QUANTUM LEAP Z952

SS GOLDMINE L42

SIRE: WLE COPACETIC E02  
CMFM JOY 022B

DAM: SVF GOLD DUST R770  
NLC LG770

**Selling ½ interest and ½ possession – there is NO OPTION to double bid and own all of her!**

CRAZY IS WHAT I AM CALLING MYSELF! No way should I be selling any interest in this destined future donor – she is the only one of her kind to date and her dam is deceased! The drought did not make for a great picture day but real cattleman can look through body condition and a picture and analyze the true value of a great one from a proven cow family! So, let's talk how we breed her progeny with four different marketing outlets: Purebred and Percentage Simmental and/or Purebred and Percentage Simbrah – we have the tools in our semen tank to go all directions and with joint ownership you have access to all our bulls on mating's with this lady.

We are looking for a breeder that wants to think outside the box and be willing to take some risk in making genetic combinations and join us in making some great ones from this royally bred heifer! EARNING POTENTIAL IS UNLIMITED!



LOT 50

50

SMITH WLE MISSY 033K

Owner: **Smith Genetics**  
ASA#: 4233813 Polled PB Simmental Cow  
Tattoo: 033K BD: 8/2/2022

Indexes:	API	TI
Percentile Ranking:	117.7	79.4
	80%	50%

HPF QUANTUM LEAP Z952 SVF/NJC BUILT RIGHT N48  
SIRE: **WLE COPACETIC E02** DAM: **WLE MISSY X3055**  
CMFM JOY 02ZB SHAWNEE MISS 770P

51

SMITH WLE MISSY 055K

Owner: **Smith Genetics**  
ASA#: 4233815 Polled PB Simmental Cow  
Tattoo: 055K BD: 8/6/2022

Indexes:	API	TI
Percentile Ranking:	117.7	79.4
	80%	50%

HPF QUANTUM LEAP Z952 SVF/NJC BUILT RIGHT N48  
SIRE: **WLE COPACETIC E02** DAM: **WLE MISSY X3055**  
CMFM JOY 02ZB SHAWNEE MISS 770P

POWER IN THE BLOOD! You be the judge of which of these full sisters you like best, but one thing stays true: the COW POWER they all will have forever. Do you like a solid black or a baldy with some chrome – hmmm? Their donor dam is WLE Missy X3055 who is an own daughter of 770P and the great Built Rite bull. She is also a full sister to Twang and Fusion that have both made their mark at Smith Genetics. Check out the sire of these heifers, the ever popular, WLE Copacetic, that has sired National Champions and had many daughters enter the donor pen at the elitest of Simmental programs. A smart breeder could buy all four of these and start an entire program around a fabulous proven cow family – now there is a thought! Wise investment opportunities lies in these females! **Open.**



LOT 51

48





LOT 52

52

## SMITH WLE MISSY 355K

Owner: **Smith Genetics**  
 ASA#: 4233814 Polled PB Simmental Cow  
 Tattoo: 355K BD: 8/5/2022

Indexes:	API	TI
Percentile Ranking:	117.7	79.4
	80%	50%

HPF QUANTUM LEAP Z952 SVF/NJC BUILT RIGHT N48  
 SIRE: WLE COPACETIC E02 DAM: WLE MISSY X3055  
 CMFM JOY 02ZB SHAWNEE MISS 770P

53

## SMITH WLE MISSY 503K

Owner: **Smith Genetics**  
 ASA#: 4233816 Polled PB Simmental Cow  
 Tattoo: 503K BD: 8/7/2022

Indexes:	API	TI
Percentile Ranking:	117.7	79.4
	80%	50%

HPF QUANTUM LEAP Z952 SVF/NJC BUILT RIGHT N48  
 SIRE: WLE COPACETIC E02 DAM: WLE MISSY X3055  
 CMFM JOY 02ZB SHAWNEE MISS 770P

*Selling Choice* **LOTS 50-53**



LOT 53

49



WALTHER SWEET KARINA 8F-DAM OF LOT 54



LOT 54

54

SMITH KARINA N BLACK 8K

Owner: Smith Genetics  
ASA#: 4233986 Polled PB Simmental Cow  
Tattoo: 8K BD: 6/7/2022

Indexes:	API	TI
Percentile Ranking:	118.7	75.0
	75%	70%

HPF QUANTUM LEAP Z952 S&S SWEET DREAMS 507C  
SIRE: WHF QUANTUM G100 DAM: WALTHER SWEET KARINA 8F  
TJ MISS 1000E WALTHER KARINA

Introducing a new Simmental donor to our program, Walther Sweet Karina 8F, that we acquired from the Wesner Sale. I was impressed with this cow’s massive makeup and kind and got excited about the possible ways she could be bred for Simmental and Simbrah. Then when she calved and I saw this 8K heifer and watched her develop I became even more confident in my decision to add this cow family. Check her out sale day and you will agree she just keeps getting better every day having been born into this extended drought! LOTSA COW POWER! **Open.**





WLE GENUINE E020-SIRE OF LOT 55



LOT 55

## 55 SMITH GENUINE CHYNA DOLL 117K

Owner: **Smith Genetics/Haley Smith**  
 ASA#: 4233856 Polled PB Simmental Cow  
 Tattoo: 117K BD: 10/6/2022

	API	TI
Indexes:	126.5	77.3
Percentile Ranking:	60%	60%

LLSF PAYS TO BELIEVE ZU194

SIRE: **WLE GENUINE E020**  
 SHAWNEE MISS 770P

CCR ANCHOR 9071B  
 DAM: **CMFM CHYNA DOLL E117**  
 HARKER'S CHYNA DOLL

The dam of this heifer we selected from the Circle M Farms Dispersal, because I always appreciated the cow power of the Harker's Chyna Doll cow and this was an opportunity to add her genetics. Taking the next step, we combined the Chyna Doll family with the 770P family by using our herd sire, WLE Genuine, in this mating. Picture day was not fun in the drought and you will be surprised when you see the cattle on video as well as sale day – big changes take place. Really nice Simmy female here that will earn her keep and you should take advantage of the breeding power she presents. **Open.**

## 56 SMITH UNO MINNIE N BLACK 824K

Owner: **Smith Genetics**  
 ASA#: 4233982 Polled PB Simmental Cow  
 Tattoo: 824K BD: 6/22/2022

	API	TI
Indexes:	128.3	77.5
Percentile Ranking:	55%	55%

CNS DREAM ON L186

SIRE: **WLE UNO MAS X549**  
 SHAWNEE MISS 770P

W/C EXECUTIVE ORDER 8543B

DAM: **SMITH MADAM MINNIE 824E**  
 SMITH MINNIE N BLACK

Great opportunity to add an own daughter of the WLE Uno Mas bull to your herd – they do not disappoint and have the ideal udder structure with lots of milk! This heifer combines Executive Order into the pedigree which brings in the famous Werning 8543U cow in the genetic line up. Now don't stop there, think about the potential of her future calf sired by Copacetic, a many time champion. Great replacement female here that will be the front pasture kind and could be a very valuable tool for producing not only Simmental but also new line Simbrah – LOTS of POSSIBILITIES! AI'd to **WLE Copacetic E02** ASA #3299037 on 8/9/23. Palpation information available sale day.



WLE UNO MAS-SIRE OF LOT 56



LOT 56

We are really excited about the two pairs we are selling in Synergy this year and think they are valuable breeding assets. Lady Champion is a functional and feminine Satisfies daughter that is long sided, smooth made and structurally correct. In addition to Satisfies she also is a maternal granddaughter of Nu Approach. She also has a balanced set of EPDs with top 10% ranking in three categories and the top 15% in two more. The proof is in the pudding with Lady Champion, as she is raising an outstanding show heifer prospect, RFI Gloria. Gloria is a powerful young heifer with length of side, abundant muscling and lots of style. She is sired by our young herd sire, RFI Encore. Encore is a Smith CRC Lubbock son and is built just like his sire with more moderation of frame. Encore contains an awesome set of EPDs, ranking in the top 5% in three categories (including TI), top 10% in two categories, top 15 in five categories and the top 20% in two categories. This pair will make a genetic and monetary enhancement to any herd right from the start. This is also a possible 3-in-1 with Lady Champion being exposed to our new Simmental bull, Smith RFI Revolution. Revolution is an exciting new herd sire that contains the genetics of NLC UpGrade, 770P and Quantum Leap. Buy with confidence. Two straws of semen are available with this lot for future use. **Pasture exposed to Smith RFI Revolution ASA #4233321 from 5/27/23 to 9/5/23.**

**Lot 100A RFI Gloria ASA #4233221, polled purebred heifer. Sired by RFI Encore. DOB: 5/20/2023.**



LOT 100 AND 100A

100

## RFI LADY CHAMPION 694E

Owner: **Reavis Farms**

ASA#: 3434648

Polled PB Simbrah Cow

Tattoo: 694E

BD: 4/13/2017

Indexes:	API	TI
Percentile Ranking:	68.2	56.1
	99%	50%

SMITH NF SIMPLY GREAT  
SIRE: SMITH SATISFIES  
SMITH GREY MIST

SMITH NU APPROACH  
DAM: RFI MISS CONTENDER  
RFI L24

101

## RFI SATISFIED GRACE 869G

Owner: **Reavis Farms**

ASA#: 4233298

Polled PB Simbrah Cow

Tattoo: 869G

BD: 2/12/2019

Indexes:	API	TI
Percentile Ranking:	79.1	61.3
	80%	25%

SMITH NF SIMPLY GREAT  
SIRE: SMITH SATISFIES  
SMITH GREY MIST

SMITH ENTITLED N RED  
DAM: RFI LOTS A GRACE 655D  
RFI GRACIE



LOT 101A



SMITH WLTRS  
CROCKETT-SIRE OF LOT  
101A AND 107

Grace is a well balanced Satisfies daughter that just puts it all together. This is a young cow with lots of performance, substance, bone, hip, style and is equipped with a gorgeous udder. She is backed by a sound maternal pedigree, as she is a granddaughter of Smith Entitled N Red. Entitled is a Dream On son and out of the R770 cow. Grace has a really balanced set of EPDs and ranks in the top 10% in three categories. This is a great investment opportunity and a chance at a quick and special return on your purchase because her calf, RFI Aurora HAS THE GOODS! Aurora has the makings of a special one and is one of the first Crockett daughters to sell at public auction. If you are looking for a show heifer, then make sure to devote some time to studying her. The balance, body, and power this heifer displays are a look into the kind of donor she is once she matures. Two units of semen are available with this female for future use. Grace sells pasture exposed to Rip Wheeler, our senior champion at the RGVBI Gain Test. **Pasture exposed to RFI Rip Wheeler, ASA #4188741 from 4/21/23 to 6/10/23 and to Smith RFI Revolution ASA #4233321 from 6/12/23 to 9/5/23. Palpation information available sale day.** **Lot 101A RFI Aurora ASA #4233302, polled purebred heifer. Sired by Smith Wltrs Crockett. DOB: 4/21/23.**



102

**RFI SUGAR COAT 80J**Owner: **Reavis Farms**

ASA#: 4233222

Polled 3/4 SM 1/4 BR Cow

Tattoo: 80J

BD: 9/20/2021

Indexes:	API	TI
Percentile Ranking:	94.6	61.8
	25%	20%

SMITH BORN TO DARE

LMC SUGAR DADDY 35/170

SIRE: **SMITH JCC COURAGEOUS 186F**DAM: **Y23**

SMITH ENJOY 186C

5K123U

Sugar Coat is a really attractive and well-balanced heifer. She is really clean in her design and smooth in her makeup. She possesses a flat hip, extended front end and has the muscling and performance required of top females. She has a bit of an outcross pedigree being sired by Smith JCC Courageous, who is out of Born To Dare and LMC Oprah. This is a top end female that will go into your herd and be a production asset for years to come. Bred females like this will offer a quick return on your investment given today's market conditions. Two units of semen are available for future use on this female including bulls like: Easy Like, Crockett, Satisfies and RFI Push, who is now owned with Brolaco Cattle Co. **Pasture exposed to RFI Push ASA #3858898 from 1/10/23 to 3/27/23. Pasture exposed to Smith Practical ASA #3401145 from 4/1/23 to 5/25/23 and to Smith RFI Revolution ASA #4233321 from 6/1/23 to 9/5/23. Palpation information will be available at sale.**



LOT 102

103

**SMITH RFI ALLURE 83J**Owner: **Reavis Farms**

ASA#: 4233591

Polled PB Simbrah Cow

Tattoo: 83J

BD: 9/22/2021

Indexes:	API	TI
Percentile Ranking:	76.0	60.5
	90%	25%

SMITH BORN TO DARE

SMITH ISGRIG CHARISMATIC

SIRE: **SMITH JCC COURAGEOUS 186F**DAM: **RFI SMITH PRINCESS 270Z**

SMITH ENJOY 186C

RFI RIO PRINCESS

Allure is another powerful daughter of Smith JCC Courageous that is moderate in her design, yet big boned, stout and super correct in her lines. She has an awesome hip design and a clean, extended front end. Allure is a maternal granddaughter of Smith Isgrig Charismatic and Smith RFI Rio Princess and she possesses the same style and flare that Rio Princess did. There is big time production potential in this young female so don't miss her. Two units of semen are available with this female from any bull in the Smith Genetics or Reavis Farms bull battery for future use. **Pasture exposed to RFI Push ASA #3401145 from 4/1/23 to 5/25/23. Pasture exposed to Smith Practical ASA #3401145 from 4/1/23 to 5/25/23 and to Smith RFI Revolution from 6/1/23 to 9/5/23. Palpation information available sale day.**



LOT 103

104

**RFI RED DARLING 104J**Owner: **Reavis Farms**

ASA#: 4233320

Polled PB Simbrah Cow

Tattoo: 104J

BD: 12/20/2021

Indexes:	API	TI
Percentile Ranking:	77.1	61.3
	85%	25%

SMITH POSSIBILITIES

SMITH DREAM CARSON 77D

SIRE: **RFI RED WAVE 776F**DAM: **RFI DREAM ALIVE 867G**

RFI LIKE A DIAMOND 567C

RFI 644D ALIVE E644

Red Darling is one of the first progeny produced by our Mercedes Champion, RFI Red Wave. Her overall balance, length of side and feminine appearance will definitely catch your attention. On her maternal side, she is a granddaughter of Smith Dream Carson and this only adds value because Carson is sired by Dream On and out of the famed R770. Darling possesses a well-balanced set of EPDs, including being in the top 15% in five categories. This also includes a top 10% in TI. Two units of semen are available with this female for future use from any bull in our battery including bulls like: Lubbock, Push, Like Never Before and Smith Shake It Up, who is the Have No Fear and Bella Amelia son purchased at Synergy last year. **Pasture exposed to Smith Practical ASA #3401145 from 3/30/23 to 5/25/23 and to Smith RFI Revolution ASA #4233321 from 6/1/23 to 9/5/23. Palpation information available sale day.**



LOT 104





RFI RED WAVE 776P-SIRE OF LOTS 104 AND 105

105

## RFI RED CHARM 106J

Owner: Reavis Farms

ASA#: 4233319

Tattoo: 106J

Polled PB Simbrah Cow

BD: 12/4/2021

Indexes:	API 74.2	TI 62.0
Percentile Ranking:	95%	20%

SMITH POSSIBILITIES

SIRE: RFI RED WAVE 776F

RFI LIKE A DIAMOND 567C

SMITH DREAM CARSON 77D

DAM: RFI DREAM VOOM 845G

RFI VA VOOM 630D

Charm is an easy fleshing female sired by our Red Wave bull. She is a belly dragger with balance and performance. Our Red Wave daughters are built right with an abundance of muscle, overall quality, breed character and eye appeal. On the maternal side, she is backed by the Smith Carson cow families. Carson daughters in their first calf crop have surfaced to the top in terms of overall appeal and performance. Charm's balanced set of EPDs ensures future production and profitability and this includes top 10% rankings in weaning weight and terminal index. Two units of semen are available with this female for future use on any Reavis Farms herd sire including bulls like: Sargeant, Easy Like and Cardinal Red Issac. **Pasture exposed to Smith Practical ASA #3401145 from 3/30/23 to 5/25/23 and Smith RFI Revolution ASA #4233321 from 6/1/23 to 9/5/23. Palpation information available sale day.**



LOT 106

106

## RFI NEVERLAND 112J

Owner: Reavis Farms

ASA#: 4233318

Tattoo: 112J

Polled PB Simbrah Cow

BD: 12/30/2021

Indexes:	API 92.0	TI 63.8
Percentile Ranking:	30%	15%

SMITH PRACTICAL 42D

SIRE: SMITH LIKE NEVER BEFORE 328G

SMITH ISGRIG BELLA NOTTE

RFI REAL DEAL

DAM: RFI LIL DEAL 927G

RFI LIL RED 380Z

He is a unique opportunity to purchase one of the first offspring out of the Smith Like Never Before bull. Like Never Before was purchased in Synergy in 2020 and he is not disappointing. He combines an awesome pedigree with the genetics of Devils Cut, Practical, Broker and Bella Bella. Neverland has the broody, modern look of today's top brood cows. Her size and scale, plus total length of body in addition to her volume and structure will be desired by innovative Simbrah breeders. She also has the EPDs that cattlemen are looking for including top 10% for birth weight and maternal calving ease and top 5% in calving ease. Two units of semen from any Reavis Farms herd bull are available for future use. **Pasture exposed to Smith Practical ASA #3401145 from 3/30/23 to 5/25/23 and Smith RFI Revolution ASA #4233321 from 6/1/23 to 9/5/23. Palpation information available sale day.**



SMITH LIKE NEVER BEFORE-SIRE OF LOT 106







LMC DIVA-GREAT GRANDDAM OF LOT 107



LOT 107



LMC WFC DREAM GIRL-FULL SISTER TO LOT 107'S MATERNAL GRANDDAM

## 107 RFI MAKE OVER 177L

Owner: **Reavis Farms**  
 ASA#: 4233325 Polled PB Simbrah Cow  
 Tattoo: 177L BD: 1/15/2023

Indexes:	API	TI
Percentile Ranking:	83.7	60.1
	60%	30%

SMITH NU APPROACH  
**SIRE: SMITH WLTRS CROCKETT**  
 SMITH RFI PAIGE

SMITH DREAM CARSON 77D  
**DAM: RFI CARRIE 879G**  
 SMITH WENTZ SHIRLEY Z133

Here is an opportunity to jump in on one of the first Crockett daughters to be offered for sale. This very feminine female is making tremendous progress by the day. She will demand your attention as you study her profile and structure and she markets herself as you admire her power and overall design. She has all the makings of a top show heifer and the genetic lineage to excel as a donor. Her pedigree includes Nu Approach, Satisfies, Carson and her maternal granddam, Z133, is a Nu Wave and Diva, making her a full sister to Dream Girl. Make Over's dam, RFI Carrie is establishing herself as one of the top producing females at Reavis Farms. This is a female that is worth your time and investment. Don't miss her! Two units of semen are available with this female for future use. **Open.**



Reavis Farms is very involved in farming in the Rio Grande Valley and have a number of diversified crops, including 1015 Sweet Onions, watermelons and sunflowers.





SMITH JUST BECAUSE-SIRE OF LOT 108



RFI DEBUTANTE-DAM OF LOT 108

SMITH SWFS JUST  
A DIVA-PATERNAL  
GRANDDAM OF LOT 108



SMITH RFI SWEET DEB-  
MATERNAL SISTER TO  
LOT 108 AND TWO TIME  
NATIONAL CHAMPION



LOT 108

108

## SMITH RFI READY OR NOT 900G

Owner: Reavis Farms/Smith Genetics  
ASA#: 3688213 Polled PB Simbrah Bull  
Tattoo: 900G BD: 7/3/2019

Indexes:	API	TI
Percentile Ranking:	108.8	63.8
	5%	15%

SMITH STOUT N BLACK  
SIRE: SMITH JUST BECAUSE  
SMITH SWFS JUST A DIVA

SMITH NF SIMPLY GREAT  
DAM: RFI MISS DEBUTANTE  
LMC TOPANGA 5T/58

What an opportunity we are presenting here! This is a rare chance to buy 100% of a proven herd bull and oh by the way he's out of the most prolific cows in the Smith Genetics and Reavis Farms partnership, RFI Miss Debutante. Study the genetics that back this bull because they read like a who's who of the Simbrah breed – Stout, Just Because, Just a Diva, Diva and Topanga just to name a few. The new owner will have automatic marketing power one day one! This bull will change the look of the new owner's herd in one generation. Ready or Not will add structural correctness, muscling, style and an overall quality look that's easy to notice and appreciated by all. If you play to win, then this is the bull to put on your team!







SMITH MAKIN MOVES- DAM OF LOT 109



LOT 109

109

## SMITH TMP CLASSIC MOVES 336K

Owner: **TMP Livestock/Smith Genetics**  
 ASA#: 4233823 Polled PB Simbrah Cow  
 Tattoo: 336K BD: 11/4/2022

Indexes:	API 86.5	TI 63.2
Percentile Ranking:	50%	15%

SMITH SATISFIES  
**SIRE: SMITH CRC LUBBOCK 36B**  
 SMITH CRC BELLA VIVE

SMITH SATISFIES  
**DAM: SMITH MAKIN MOVES**  
 LM SHE MOVES 3L/136

Smith TMP Classic Moves is a long bodied, elegant heifer with plenty of thickness to give her lots of volume for breeding. She has smooth lines, square hips and lots of bone. She has a phenotype that catches the eye. Her EPDs are in the top 15% for TI and in the top 3% for calving ease. Classic Moves is also a genetic package! Just reading her name suggests that the legendary She Moves is in her bloodline and she is the granddam to this heifer. Her dam, Smith Makin Moves is a Satisfies daughter that we purchased in 2015 to strengthen our herd. But that's not all. Her sire is Smith CRC Lubbock, who is also a Satisfies son and is a descendant from the great Bella Bella cow through her daughter, Smith CRC Bella Vive, a many times champion for Caleb Rodenbeck. This calf has the potential to be successfully shown and certainly to produce the right kind of calves. She is tie broke and should be halter broke at sale time. If purchased by a junior, she comes with all the benefits of both TMP and Smith Genetics junior programs. If purchased by an adult breeder, she comes with two straws of semen from any bull in the TMP or Smith Genetics bull batteries. Qualifies for both Superbowl and Synergy Showcase. **Open.**



SMITH LILLY N RED- GRANDDAM OF LOT 110

110

## SMITH TMP LUCKY LILLY 338K

Owner: **TMP Livestock/Smith Genetics**  
 ASA#: 4233824 Polled 3/4 SM 1/4 BR Cow  
 Tattoo: 338K BD: 11/2/2022

Indexes:	API 99.2	TI 63.5
Percentile Ranking:	15%	15%

LMC JOHNNIE WALKER 5R179  
**SIRE: SMITH 7N BOURBON MAN**  
 LMC SWEET SPOT 3S/376

WHF DEVILS CUT A245  
**DAM: SMITH TMP LIL LILLY N RED**  
 SMITH LILLY N RED

Smith TMP Lucky Lilly 338K is a percentage Simbrah heifer that brings volume, muscle and bone to the forefront. She has wide, square hips, lots of depth and eye-catching appeal. Her EPDs place her in the top 15% for both API and TI. Lucky Lilly brings together two of the leading Simbrah programs. On the dam's side, her bloodline is from Smith Genetics and she is a granddaughter of Smith Lilly n Red, one of Kaleb's senior year show heifers. Smith Lilly n Red was the Simmental champion at the inaugural Elite Showcase in 2013 and the Simmental Champion at Synergy that same year. Lucky Lilly's dam is sired by WHF Devils Cut. Her sire is Smith 7N Bourbon Man, who is descended from cattle bred in the La Muneca program. This heifer is being offered as a breeding piece but has the potential to be a show calf. She is tie broke and should be halter broke by sale day. If purchased by a junior, she comes with all the benefits of both TMP and Smith Genetics junior programs. If purchased by an adult breeder, she comes with two straws of semen from any bull in the TMP or Smith Genetics bull batteries. Qualifies for both Superbowl and Synergy Showcase. **Open.**



LOT 110



LOT 111

111

## MS STRACK J308

Owner: Strack Farms

ASA#: 4067248

Tattoo: J308

Polled PB Simbrah Cow

BD: 10/10/2021

Indexes:	API	TI
Percentile Ranking:	95.8 25%	53.2 75%

LMC RED ALERT 5A/25

MR STRACK W125

SIRE: HR RED LABEL E 31

DAM: MS HR STRACK Z334

MM MISS NIKE

MS STRACK U47

Another really, nice Red Label daughter. This cherry, dark red and blazed face heifer has an API in the top 25% of the breed. Her dam is from one of my strongest cow families. **Pasture exposed to Mr. Line 2J ASA #3950508 from 2/10/23 to 4/29/23, showing a heat cycle on 3/323. Palpation information will be available at sale.**



LOT 112

112

## MS STRACK J333

Owner: Strack Farms

ASA#: 4067254

Tattoo: J333

Polled PB Simbrah Cow

BD: 11/12/2021

Indexes:	API	TI
Percentile Ranking:	76.8 85%	48.5 95%

LMC RED ALERT 5A/25

MR STRACK A351

SIRE: HR RED LABEL E 31

DAM: MS STRACK D471

MM MISS NIKE

LR WAREFULL W903

This heifer is moderate framed, easy fleshing with a beautiful udder. **Pasture bred to Mr. Line 2J ASA #3950508 to a heat on 2/1/23. Palpation information will be available at sale.**



LOT 113

113

## MS STRACK J326

Owner: Strack Farms

ASA#: 4079933

Tattoo: J326

Polled PB Simbrah Cow

BD: 12/19/2021

Indexes:	API	TI
Percentile Ranking:	80.9 70%	53.3 70%

6GLMC PAPPADÉAUX Y111

LMC RED ALERT 5A/25

SIRE: LMC BETM FRANKLIN 5F/180

DAM: HR RED RUBY

LMC SWEET DREAMS

WCC RANEE R03

J326 is a big growthy heifer that goes back to 6GLMC Pappadeaux. **Pasture exposed to Mr. Line 2J ASA #3950508 from 2/10/23 to 4/29/23. A heat was observed on 2/18/23. Palpation information will be available at sale.**



114

**MS STRACK J324**Owner: **Strack Farms**

ASA#: 4079932

Horned PB Simbrah Cow

Tattoo: J324

BD: 12/15/2021

Indexes:	API	TI
Percentile Ranking:	84.8	57.8
	55%	40%

6GLMC PAPPADÉAUX Y111

RX BLAZE SHIRAZ

SIRE: LMC BETM FRANKLIN 5F/180

DAM: MCR MS RUBY TUESDAY 437C

LMC SWEET DREAMS

LN RUBY Y151

A very nice pedigreed heifer for your consideration. **Pasture exposed to Mr. Line 2J ASA #3950508 from 2/10/23 to 4/29/23. Observed with the bull on 4/2/23. Palpation information will be available at sale.**



LOT 114

115

**MS STRACK K335**Owner: **Strack Farms**

ASA#: 4079935

Polled PB Simbrah Cow

Tattoo: K335

BD: 1/9/2022

Indexes:	API	TI
Percentile Ranking:	94.5	56.8
	25%	45%

PRR CONCORD 614D

HR MEGA RED

SIRE: PRR KING PIN 49H

DAM: MS STRACK G147

PRR SHARITA 976Z

HR ULTIMA C8

This is the first female to sell from our PRR King Pin bull. She was on included in a sale to Costa Rica and that shipment failed to go through. Because of that, we got a late start breeding her. **Pastured to exposed to PRR Comrado ASA #3743304 from 6/1/23 to 7/18/23 and Mr. Strack J300 ASA 4067344. Palpation information will be available at sale.**



LOT 115

116

**MS STRACK K345**Owner: **Strack Farms**

ASA#: 4096270

Polled PB Simbrah Cow

Tattoo: K345

BD: 2/3/2022

Indexes:	API	TI
Percentile Ranking:	74.2	50.9
	95%	85%

LMC RED ALERT 5A/25

MR STRACK B375

SIRE: HR RED LABEL E 31

DAM: MS STRACK E547

MM MISS NIKE

MS STRACK W88

She is out of a really nice cow that goes back to Ms JVCC SW "Secret Weapon", who was shown by Jamie Vayon back in the day. This heifer was also supposed to have sold to Costa Rica, but again the shipment fell through, so a late start to breeding her. **AI'd to Mr Strack G148 ASA #3722844 on 7/17/23. Pasture exposed to Mr Strack J300 ASA #4067344 7/25/23 to 8/30/23. Palpation information available sale day.**



HR RED LABEL-SIRE OF LOTS 11,112,116 AND 118



LOT 117

117

## MS STRACK K355

Owner: **Strack Farms**

ASA#: 4219373

Tattoo: K355

Polled PB Simbrah Cow

BD: 9/8/2022

Indexes:	API	TI
Percentile Ranking:	75.6	49.2
	90%	90%

MR STRACK Y254

SIRE: **HR MEGA RED**

MM MISS NIKE

HR RED LABEL E 31

DAM: **MS STRACK G131**

WCC WINTER W22

This heifer is a result of a heavy boned, large framed Red Label daughter that I flushed to HR Mega Red. I really like how this mating produced. I think K355 should be considered for the show ring and will be a good breeding piece in anyone's herd. We are selling full interest with the right to flush her at the new owner's convenience. **Open.**



LOT 118

118

## MS STRACK K568

Owner: **Strack Farms**

ASA#: 4219374

Tattoo: K568

Polled PB Simbrah Cow

BD: 10/3/2022

Indexes:	API	TI
Percentile Ranking:	79.0	48.8
	80%	90%

LMC RED ALERT 5A/25

SIRE: **HR RED LABEL E 31**

MM MISS NIKE

MR STRACK Y254

DAM: **HR MISS STRACK C13**

WCC SHINING BEAUTY S15

This heifer is halter broke and qualifies for the Synergy Showcase. **Open.**

**Strack Farms-**  
**Agriculture since 1845 and Simbrahs since 1983**





119

**MCR CAROLINA KING J133**

Owner: **Monte Christo Cattle Co.**  
 ASA#: 3967499 Polled PB Simbrah Cow  
 Tattoo: J133 BD: 11/7/2021

Indexes:	API	TI
Percentile Ranking:	89.4	53.7
	40%	70%

LMC RED ALERT 5A/25 OAKS SIMBA 021W  
 SIRE: **HR MR STRACK C 6** DAM: **MS CHA-CHA Z160**  
 TS YUCATAN MS QUEEN CITRIANNA P234

J133 is a solid red, slick-haired, polled granddaughter of LMC Red Alert with a great set of EPDs highlighted by her milk production potential. Her dam has an all-time calving frequency of 353 days for nine calves in a row. This heifer is a dream to work, stays in flesh easily and bred to safely calve at 28+ months of age. **AI'd to Smith McCrary Fireball ASA #2877680 on 2/24/23. Pasture exposed to PRR Quest 206H ASA #3922061 from 3/8/23 to 4/19/23. Palpated safe in June, updated information available at sale.**



LOT 119

120

**MCR MILKY WAY J87**

Owner: **Monte Christo Cattle Co.**  
 ASA#: 3954677 Polled 3/4 SM 1/4 BR Cow  
 Tattoo: J87 BD: 10/21/2021

Indexes:	API	TI
Percentile Ranking:	91.8	54.1
	30%	65%

LMC RED ALERT 5A/25 RFI SMITH THUNDERSTRUCK  
 SIRE: **HR MR STRACK C 6** DAM: **MS JEZABELL A761**  
 TS YUCATAN R-23

We brought two LMC Red Alert granddaughters to Synergy this time. J87 is a granddaughter of the great Thunderstruck bull out of Dream On that Tim syndicated several years back. This heifer has a great milk EPD and a perfect udder to match, plus an API of 91. Her dam produced nine calves, all less than 359 days apart--five have been heifers, three of which are producing for us just like the mama and this is only the second of her daughters to sell. Will be calving at 28+ months of age. **AI'd to Smith McCrary Fireball ASA #2877680 on 2/24/23. Pasture exposed to PRR Quest 206H ASA #3922061 from 3/8/23 to 4/19/23. Palpated safe in June, updated information available at sale.**



LOT 120

121

**MCR RED BLONDY J15**

Owner: **Monte Christo Cattle Co.**  
 ASA#: 3953861 Polled PB Simbrah Cow  
 Tattoo: J15 BD: 9/5/2021

Indexes:	API	TI
Percentile Ranking:	75.5	48.9
	90%	90%

SMITH SATISFIES MCX MAXIMUS  
 SIRE: **SMITH MCCRARY FIREBALL** DAM: **MCR MONROE SKY F299**  
 SMITH MCCRARY HI PRICE PRR SHES FLASHY 44T

J15 is a solid red, polled Fireball daughter, out of the senior herd sire Smith Satisfies. She has a great set of EPDs with emphasis on milk and fertility. Her granddam, PRR She's Flashy has a calving frequency of 347 days and an average WW of 618 pounds on nine calves, many of which are still producing for us. She's color correct, docile with all the genetic ingredients to be a great producer. **AI'd to PRR Revolution ASA #2990263 on 2/24/23. Pasture exposed to PRR Quest 206H ASA #3922061 from 3/8/23 to 4/19/23. Palpated safe on 6/26/23.**



LOT 121





LOT 122

122

## MCCRARY STEPS BLOSSOM

Owner: McCrary Farms

ASA#: 4233696

Tattoo: 889K

Polled PB Simbrah Cow

BD: 9/15/2022

Indexes:	API	TI
Percentile Ranking:	90.1 35%	63.1 15%

SMITH HAVE NO FEAR 909B

SIRE: SMITH STEPPIN' UP YOUR GAME  
WENTZ SMITH SUPERIOR

MCCRARY SMITH OL' ROY

DAM: MCCRARY BLOSSOM 89G  
SMITH HAGAN BLOSSOM

Take a look at this black baldie Simbrah show heifer prospect and appreciate the elegance and style she has to offer. Blossom contains impeccable structure packed into a moderate frame, with balance and breed characteristic. This female caught our eye early and sells halter broken and show-ready with a disposition suitable for any junior exhibitor. When studying her pedigree, it came as no surprise to us that this phenomenal heifer's lineage traces to ACC Miss Savior A4P "Granny P" – the foundation Simmental used to develop the Smith Genetics program and includes the likes of countless breed greats for both Simbrah and Simmental. Blossom qualifies for all McCrary Farms sponsored events, including the Simbrah Synergy Showcase and the Superbowl. She sells with access to two straws of semen at her new owner's disposal for future breeding of this female. **Open.**



LOT 123

123

## SMITH MCCRARY ONLY GIRL 812K

Owner: McCrary Farms/Smith Genetics

ASA#: 4233697

Tattoo: 812K

Polled PB Simbrah Cow

BD: 9/6/2022

Indexes:	API	TI
Percentile Ranking:	85.6 55%	59.2 30%

WLE UNO MAS X549

SIRE: SMITH ONE AND ONLY 895G  
LMC MISS DIVA

MCCRARY SMITH OL' ROY

DAM: SMITH MCCRARY TOP GIRL  
BURCH PURE CLASS 112Z

Only Girl is another purebred Simbrah female with show potential. She sells halter broken and show-ready – check out all this female has to offer both on paper and in the pasture. Only Girl is a moderate framed and high performance female that offers a balanced set of EPDs and a pedigree that features the influence of Uno Mas, Diva and Charismatic. Don't miss this show heifer prospect in the pens at sale time! This lot qualifies for the Synergy Showcase and Superbowl, and she sells with access to two straws of semen at her new owner's disposal for future breeding of this female. **Open.**



SMITH STEPPIN' UP YOUR GAME - SIRE OF LOT 124

124

## MCCRARY CHARLOTTE STEPS 055K

Owner: McCrary Farms

ASA#: 4233699

Tattoo: 055K

Horned PB Simbrah Cow

BD: 10/24/2022

Indexes:	API	TI
Percentile Ranking:	96.8 20%	65.3 10%

SMITH HAVE NO FEAR 909B

SIRE: SMITH STEPPIN' UP YOUR GAME  
WENTZ SMITH SUPERIOR

SMITH PRACTICAL 42D

DAM: SMITH CHARLOTTE'S LADY 055H  
SMITH CHARLOTTE 755C

Charlotte Steps is another halter broken junior show heifer prospect we added to this year's Synergy offering. This October female comes with a loaded set of EPDs, ranking in the top 4% for Calving Ease, 5% for Birthweight, 20% for the API and in the top 10% for the TI. Don't let Charlotte Steps step on by on sale day and remember she qualifies to show at both the Synergy Showcase and Superbowl! She sells with access to two straws of semen at her new owner's disposal for future breeding of this female. **Open.**



125

**SMITH MCCRARY GO TO KRISTY 89H**

Owner: **McCrary Farms/Smith Genetics**  
 ASA#: 4233700 Polled PB Simbrah Cow  
 Tattoo: 89H BD: 5/10/2020

Indexes:	API	TI
Percentile Ranking:	73.6	56.3
	95%	50%

SMITH CRC LUBBOCK 36B SMITH SATISFIES  
**SIRE: SMITH RFI GO-TO 708E** **DAM: SMITH KRISTY 89D**  
 SMITH RFI SWEET DEB LMC DREAM CATCHER 5Y/89

Look no further – Go To Kristy is your go to girl for any progressive breeder in search of the missing link to move their herd on up. Her dam has been hard at work in the production pasture at McCrary Farms and she was first a show heifer successfully exhibited by Hallie Hackett. This purebred Simbrah female is out of the Smith Genetics and Reavis Farms herd sire, Smith RFI Go-To, who took the 2018 International Reserve Grand Champion Bull title and who is from the Debutante/Sweet Deb Cow Family and out of the great Lubbock sire. She will impress progressive breeders with her clean lines, length of neck and overall structural correctness. This lot sells with access to two straws of semen at her new owner's disposal for breeding this female. **Pasture exposed to McCrary Smith Chilly 54F ASA #4093999 from 1/17/23 to 3/14/23. Safe in calf.**



SMITH RFI GO-TO 708E-SIRE OF LOT 125

126

**SMITH MCCRARY GRAND ENTRANCE**

Owner: **McCrary Farms/Smith Genetics**  
 ASA#: 4233701 Scurred PB Simbrah Cow  
 Tattoo: 229H BD: 5/11/2020

Indexes:	API	TI
Percentile Ranking:	83.8	56.8
	60%	45%

WLE TWANG Z547 SMITH CRC LUBBOCK 36B  
**SIRE: SMITH 7N JUST ARRIVED 605F** **DAM: SMITH WLE THIS IS ME**  
 SF/RICA SUAVE SMITH RFI SILVIA 229Y

Another testament to the quality of cattle offered at Synergy, Grand Entrance is out the phenomenal Smith WLE This Is Me female we purchased in here several years back and that we did not want to let go! Study her pedigree and you will see that she is the product of crossing some of the greatest genetic lines from established producers in the Simbrah breed. The breeding opportunities her new owner will have with the offer of two straws to use in breeding this lot from any of our bulls make her potential limitless! **Pasture exposed to Smith One And Only 895G ASA #3629632 from 1/17/23 to 3/14/23. Safe in calf.**



RFI RIO PRINCESS 589R-LOT 126 IS A MEMBER OF THE PRINCESS COW FAMILY

127

**SMITH MCCRARY ENDLESS 709J**

Owner: **McCrary Farms/Smith Genetics**  
 ASA#: 4233703 Polled PB Simbrah Cow  
 Tattoo: 709J BD: 10/12/2021

Indexes:	API	TI
Percentile Ranking:	72.1	59.1
	99%	30%

SMITH NU APPROACH SMITH RONEN  
**SIRE: SMITH WLTRS CROCKETT** **DAM: RFI EVERMORE**  
 SMITH RFI PAIGE RFI SMORE

Take a look at this purebred red Simbrah and notice her broodiness and fleshing ability – this is the type we hate to let go! Endless contains impeccable structure packed into a moderate frame, with balance and breed characteristic. Like her mother, a product of the “magic mating” of crossing Nu Wave II and Sargeant lines, Endless is of the kind that is built to produce and last – and that’s just what she will do! Take advantage of the value-added option of two straws from the Smith and McCrary herd bull batteries for use in the future breeding of this lot. **Pasture exposed to Smith RFI Cardinal Red Isaac ASA #3594572 from 6/20/23 to 7/30/23 and to Smith McCrary Tundra ASA #3784720 from 7/30/23 to sale time. Palpation information available sale day.**



SMITH WLTRS CROCKETT-SIRE OF LOTS 127 AND 128

128

**MCCRARY SHEILA 353J**

Owner: McCrary Farms  
 ASA#: 4233702 Polled PB Simbrah Cow  
 Tattoo: 353J BD: 10/15/2021

Indexes:	API	TI
Percentile Ranking:	68.8	52.9
	99%	75%

SMITH NU APPROACH  
**SIRE: SMITH WLTRS CROCKETT**  
 SMITH RFI PAIGE  
 SMITH SECRETS LEGEND  
**DAM: SMITH MCCRARY LEG UP**  
 SMITH 352C

McCrary Sheila is an outstanding Purebred Simbrah female with breed character – she has developed into an unbelievable good brood cow and is ready to get to work in your herd! The overall mass and power of substance in this female are indications to her quality and the same quality she will bring to your program. Sheila comes from our 352 Cow Family, a strong maternal family originating from the first set of cattle we purchased from Smith Genetics with roots tracing back to cattle bred by Tim shortly after he arrived in Texas. Remember, two straws of semen from any McCrary Farms sires are available for future use on this female. **Pasture exposed to Smith RFI Cardinal Red Isaac ASA #3594572 from 6/20/23 to 7/30/23 and to Smith McCrary Tundra ASA #3784720 from 7/30/23 to sale time. Palpation information available sale day.**



SMITH ONE AND ONLY  
 895G-SIRE OF LOT 129A



WLE GENUINE E020-  
 SIRE OF LOT 130A



MCCRARY SMITH  
 FORTUNATE-SIRE OF  
 LOT 131



**Many of the show heifers selling will be halter broke and ready to show in the \$15,000 Synergy Showcase the next day. YOU MUST ENTER THE SHOW SATURDAY NIGHT AT THE CHECKOUT DESK.**

129

**MCCRARY SMITH SLEEK 286B**

Owner: McCrary Farms  
 ASA#: 3000141 Polled 3/4 SM 1/4 BR Cow  
 Tattoo: 286B BD: 5/17/2014

Indexes:	API	TI
Percentile Ranking:	104.6	70.3
	10%	3%

SMITH MCCRARY ANDY BLACK  
**SIRE: MCCRARY SMITH INSPIRED**  
 SMITH MCCRARY YW KIM  
 SMITH MCCRARY ANDY BLACK  
**DAM: MCCRARY SWEET BELLA**  
 SMITH MCCRARY JIL

Sleek and Sleek Only are a fancy multi-generation, three-quarter blood cow-calf pair that will catch many eyes on sale day. This female and her Smith One And Only bull calf she is raising at her side are a tribute to the consistency of our 186 cow family and the power and production of our State Fair of Texas and San Antonio Grand Champion Simmental sire, Smith McCrary Andy Black - a Dream On son out of our Houston Grand Champion Simmental Andi Lu donor. This remarkable pedigree of performance-based cattle earn Sleek a ranking in the top 10% of the breed for API and top 3% for TI. We are very proud to offer this female, bred back and with her bull calf at side for a three-in-one package, and we are excited to see her continue to produce for her new owner as she has for us! **Pasture exposed to Smith RFI Cardinal Red Isaac ASA #3594572 from 6/20/23 to 7/30/23 and to Smith McCrary Tundra ASA #3784720 from 7/30/23 to sale time. Palpation information available sale day. Lot 129A McCrary Sleek Only 286L ASA #4233698, polled 3/4 SM x 1/4 BR bull. Sired by Smith One and Only 895G. DOB: 5/23/23.**

130

**SMITH MCCRARY MONTANA**

Owner: McCrary Farms/Smith Genetics  
 ASA#: 3136932 Polled PB Simbrah Cow  
 Tattoo: 137C BD: 10/28/2015

Indexes:	API	TI
Percentile Ranking:	74.7	62.1
	95%	20%

SMITH MCCRARY ANDY BLACK  
**SIRE: MCCRARY SMITH INSPIRED**  
 SMITH MCCRARY YW KIM  
 SMITH EVAN  
**DAM: SMITH MCCRARY SOFIA**  
 SMITH WISH U HAD ME

Be sure to study this impressive pair in the pens on sale day. Montana contains great structure packed into a moderate frame without giving up her breed characteristic. Stemming from the matriarch Simbrah Heartfelt Cow family and crossed with our Inspired senior herd sire, Montana offers a unique pedigree with outcross opportunities for her new owners. Remember this female sells with two straws of semen for future breeding of Montana to any McCrary Farms herd sires. **Pasture exposed to WLE Genuine E020 ASA #3440408 from 6/21/23 to 7/5/23 and to Smith McCrary Tundra ASA #3784720 from 7/30/23 to sale time. Palpation information available sale day. Lot 130A: Smith McCrary Genuines Montana 137L ASA #4233695. Polled 3/4 SM x 1/4 BR bull. Sired by WLE Genuine E020. DOB: 5/12/23**

131

**RFI ON MY MIND 577C**

Owner: McCrary Farms  
 ASA#: 3096404 Polled 3/4 SM 1/4 BR Cow  
 Tattoo: 577C BD: 12/10/2015

Indexes:	API	TI
Percentile Ranking:	87.1	63.4
	50%	15%

SVF/NJC AMAZON  
**SIRE: MCCRARY SMITH FORTUNATE**  
 HAGAN SMITH JAZZY N RED  
 SMITH EVAN  
**DAM: RFI LADY EVA 300Z**  
 RFI 157P

Here is another great daughter of Fortunate that is nursing a May born heifer calf sired by McCrary Smith Chilly 54F. You'll appreciate the maternal power of this cow when you evaluate her heifer calf at side. On My Mind is a sound powerhouse of a cow from fellow breeders, Reavis Farms and who has worked wonders in our program. Take advantage of our offer to use two straws of semen from our herd bull battery for use in future breeding of this female. **Pasture exposed to McCrary Smith Chilly 54F ASA #4093999 from 6/2/23 to 7/30/23 and to Smith McCrary Tundra ASA #3784720 from 7/30/23 to sale time. Palpation information available sale day. LOT 131A: McCrary Chilled 577L ASA #4233694. Polled 3/4 SM x 1/4 BR heifer. Sired by McCrary Smith Chilly 54F. DOB: 5/10/23.**



# We Remember Nancy.

On May 13, 2023, our dear friend and longtime cattle photographer, Nancy Pruitt passed. While she was a nationally recognized photographer, we will remember her for so much more—as even in the picture pen she was the kindest one there and always worked the hardest for the best shot.

*"I will treasure our photos that have her name across them as the term 'it's a Nancy photo' means so much more, now. I will miss never hearing her say, 'OH OH OH' ... because those were her words when an animal would walk into the pose. Of course, if she said it too loud they moved and she would smile and say 'oh darn it.' I loved her pictures, because I felt she captured the personality of the animal, as well as their physical attributes. I hope as you look at the many reference photos with a "Nancy" on them in this catalog, you will remember her not only for her talent, but her kindness and commitment to our industry."*  
~Tim Smith

Nancy was a 1976 graduate of Texas A&M University with a degree in agricultural journalism.

In 1977, she joined the staff of Brangus Journal and part of her responsibilities required taking cattle photos. This opened another avenue of creativity for her, as she was already writing and designing ads and eye-catching layouts for the monthly magazine. Pruitt loved the photography part of her position, and it would become a lifelong passion. She also began drawing and painting cattle during this time.

She would leave Brangus in 1980 to join the editorial staff at The Cattleman. From there she would take advertising positions at Granada and Camp Cooley Ranch, where her photography and design skills produced award winning campaigns and her work was recognized on a national level. She became a sought-after cattle photographer across breeds and this led her to open her own company that she operated until her death.

Pruitt was an avid horse enthusiast and competed in stock horse events. She was also active in a community Bible study and she helped many aspiring cattle photographers.

She annually served as a judge for the Fort Worth Stock Show Commercial Heifer Sale Scholarship program. Because of her commitment to that program, a scholarship has been established in her memory as part of the Fort Worth Stock Show Commercial Heifer Sale. The proceeds from this lot, will be added to that scholarship.

***Selling 3 units of semen on bulls solely owned by Smith Genetics and semen has never been sold on these bulls prior to this sale.***

The semen can be used for AI or IVF – one bid three times the money with 100% of proceeds going to her scholarship. Buyer can mix or match! Bulls included would be these pictured. Note the "Nancy" on each one.



Smith Practical



Stout N Black



Smith No Better Than This



Smith Dirty Mike



Smith Isgrig Something in Red





Bringing you the *Quality, Pedigree and Power*



4:00 PM • SMITH GENETICS, GIDDINGS, TEXAS

9.23.23



Your Opportunity To Acquire The Breed's  
Most Proven and Productive Genetics!

SALE BROADCAST LIVE ON [WWW.DVAUCTION.COM](http://WWW.DVAUCTION.COM)